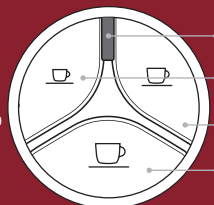


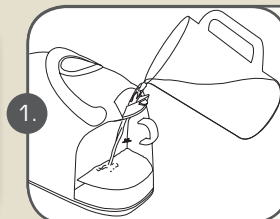
# CAFFITALY QUICK START GUIDE:

## FIRST TIME USE

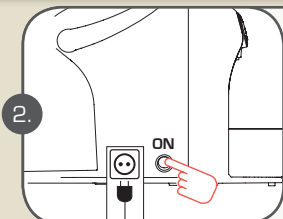
Diagram 1



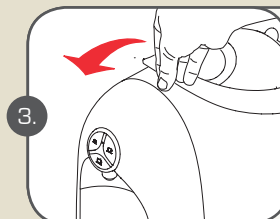
**Indicator Light**  
(Orange=Descale | Red=Check System)  
**Single Espresso Button**  
30ml (White)  
**Double Espresso Button**  
60ml (White)  
**Tea Button** - 120ml (Blue)  
(Tea & Hot Water ONLY)



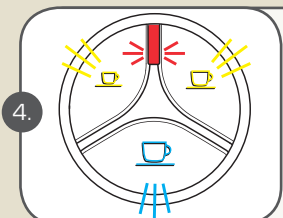
Fill the tank with fresh, still water (either by filling through the water tank cover or removing the water tank).



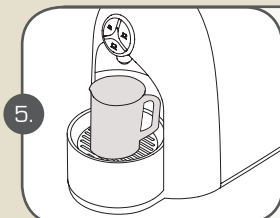
Plug in the appliance and switch it on using the **Power On/Off Switch**.



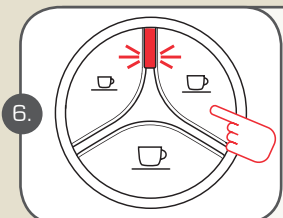
Make sure the lever is closed.  
  
\*Ensure there is no capsule in machine.



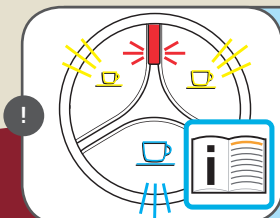
Along with the Button lights, the **Indicator Light** will also alternately blink **RED**.



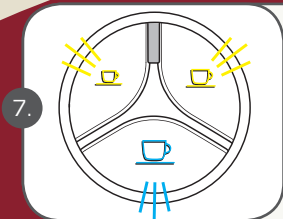
Place a large empty container (at least 250 ml) under the coffee dispensing spout.



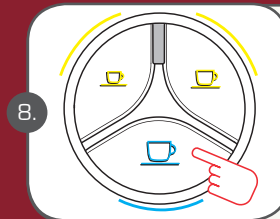
Press any of the buttons. The machine will draw water through the system. (This will take about 30 sec). When done the **Red Indicator Light** will switch off.



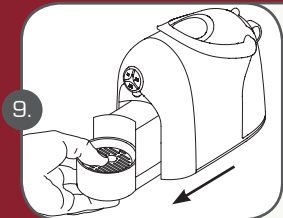
**NOTE:** If the **Red Indicator Light** continues to blink and no water has been extracted, repeat step 6.



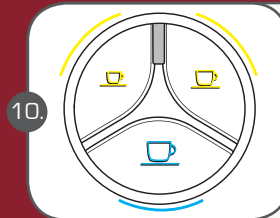
After Step 6 has successfully completed all the button lights will continue to blink, the machine is warming up. (This will take about 1 min)



When all the button lights remain steadily lit, rinse by pressing the **Tea Button**. Press again to repeat rinse cycle.

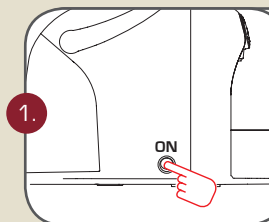


At the end of this operation, pull forward and empty any water from the used capsule draw.

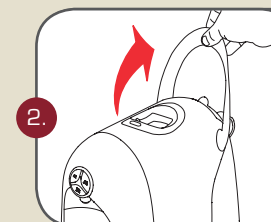


All button lights lit steadily, your machine is now ready to use.

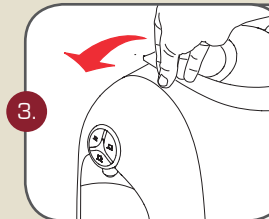
## EVERYDAY OPERATION



Switch the machine on using the **On/Off Switch**. Wait about 1 min for machine to warm up.



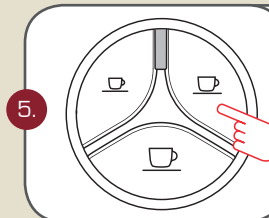
Raise the lever to open the capsule compartment.



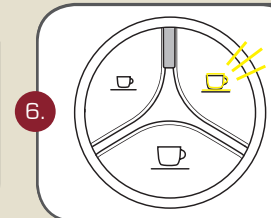
Insert the capsule, pressing it gently into place.



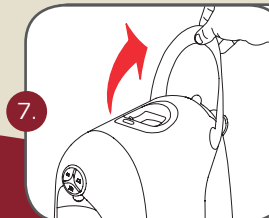
Close the lever fully and place a cup or mug under the coffee dispensing spout.



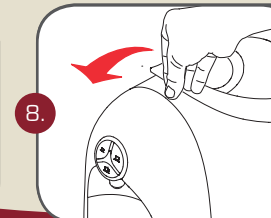
Press and release the button corresponding to the type of beverage you want as per **Diagram 1** above.



Selected beverage button will blink and machine will stop dispensing on reaching the programmed quantity and emit a beep.



Raise the lever to eject the used capsule into the drawer.



Close the lever.

**NOTE:** Between uses, to ensure optimum product delivery, remove used capsule from machine and rinse by pressing any button.

**TIP:** The quantities of beverage dispensed can be programmed. Please refer to chapter "Programming the quantity of coffee in a cup" in your Instruction Book.

For more information, tips and video tutorials please visit our website: [www.caffitalysystem.com.au](http://www.caffitalysystem.com.au)

**Caffitaly**  
system

COMPATIBLE WITH CAPSULE RANGES FROM

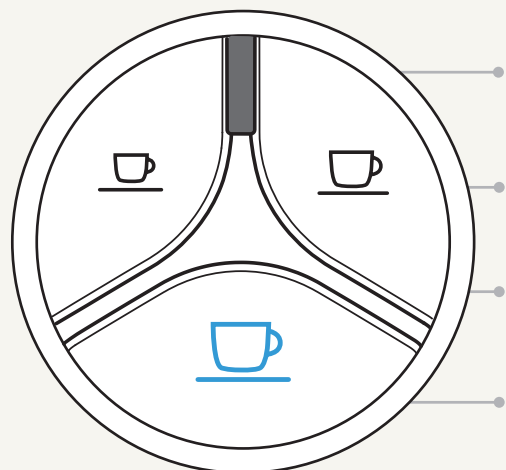
**Gloria Jean's**  
COFFEES

**Select**

**TWININGS**  
OF LONDON



## CAPSULE MACHINE BUTTONS



### Indicator Light

Orange=Descale  
Red=Check System

**Single Espresso Button**  
30ml (White)

**Double Espresso Button**  
60ml (White)

**Tea Button - 120ml (Blue)**  
(Tea & Hot Water ONLY)

 **Single Espresso Button** 30ml (White)

 **Double Espresso Button** 60ml (White)

 **Tea Button - 120ml (Blue)**  
(Tea & Hot Water ONLY)

## MILK FROTHER SETTINGS

 **Frothing Paddle | 1 Click - heat & froth**

 **Mixing Paddle | 2 Clicks - heat & mix**

 **Frothing Paddle | 3 Clicks - cool & froth**

## ESPRESSO



> Use your favourite blend of coffee from the range of capsules compatible with your Caffitaly System.

> Press the **Single Espresso Button** to extract a 30ml shot of coffee into your cup.

## LONG BLACK



> Use your favourite blend of coffee from the range of capsules compatible with your Caffitaly System. Press the **Single Espresso Button** to extract a 30ml shot of coffee into your cup.

> **Discard capsule** into capsule draw by raising handle, lower handle and top up your cup with hot water (**Tea Button**).

## FLAT WHITE



> Use your favourite blend of coffee from the range of capsules compatible with your Caffitaly System. Press the **Single Espresso Button** to extract a 30ml shot of coffee into your cup.

> Add 200ml of milk to your Caffitaly Milk System, use the **Mixing Paddle + two clicks** of the power button. Once finished, add to your coffee & enjoy.

## LATTE



> Use your favourite blend of coffee from the range of capsules compatible with your Caffitaly System. Press the **Single Espresso Button** to extract a 30ml shot of coffee into your cup.

> Add 150ml of milk to your Caffitaly Milk System, use the **Mixing Paddle + two clicks** of the power button. Once finished, add to your coffee & enjoy.

## CAPPUCCINO



> Use your favourite blend of coffee from the range of capsules compatible with your Caffitaly System. Press the **Single Espresso Button** to extract a 30ml shot of coffee into your cup.

> Add 100ml of milk to your Caffitaly Milk System, use the **Frothing Paddle + one click** of the power button. Once finished, add to your coffee & enjoy.

## MOCHA



> Use your favourite coffee capsule, compatible with your Caffitaly System. Press the **Single Espresso Button** to extract a 30ml shot of coffee into your cup. Follow up with a Gloria Jean's Coffees™ Classic Hot Chocolate drink. Press the **Double Espresso Button** to extract a 60ml shot into your cup.

> Add 50ml of milk to your Caffitaly Milk System, use the **Frothing Paddle + one click** of the power button. Once finished, add to your mocha blend & enjoy.

## CLASSIC HOT CHOCOLATE



> Use a Gloria Jean's Coffees™ Classic Hot Chocolate drink capsule. Press the **Double Espresso Button** to extract a 60ml shot of chocolate into your cup.

> Add 50ml of milk to your Caffitaly Milk System, use the **Frothing Paddle + one click** of the power button. Add to your chocolate drink & enjoy.

Suggestions are based on 180ml - 200ml cup sizes, for larger cups/mugs or for increased strength & flavour, adjust both capsule quantity & milk quantity to desired amount, within capability of both capsule and milk systems. All drinks may also require sweetener as desired.