

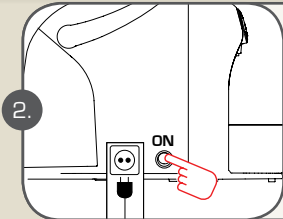
CAFFITALY QUICK START GUIDE:

FIRST TIME USE

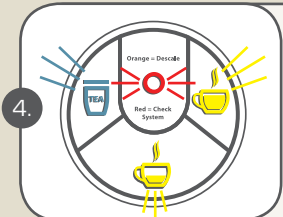
Diagram 1



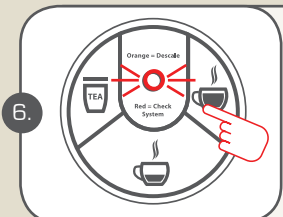
Tea Button - 120ml (Blue)
(Tea & Hot Water ONLY)
Indicator Light
(Orange=Descalc | Red=Check System)
Double Espresso Button
60ml (White)
Single Espresso Button
30ml (White)



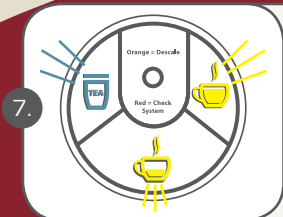
Plug in appliance.
Switch machine on using the **On/Off Switch**.



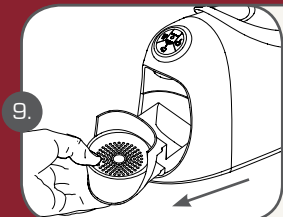
Along with the Button lights, the **Indicator Light** will also alternately blink **RED**.



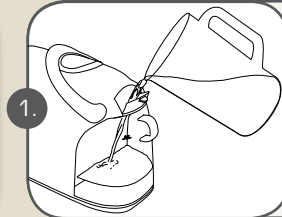
Press any of the buttons. The machine will draw water through the system. (This will take about 30 sec). When done the **Red Indicator Light** will switch off.



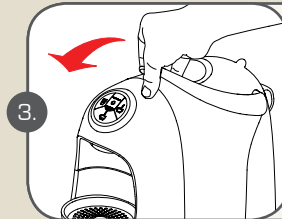
After Step 6 has successfully completed all the button lights will continue to blink, the machine is warming up. (This will take about 1 min)



At the end of this operation, pull drawer forward and empty any water from the used capsule drawer.

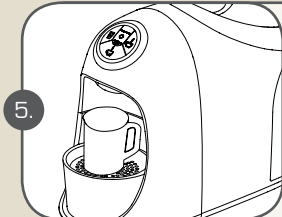


Fill the tank with fresh, still water (either by filling through the water tank cover or removing the water tank).

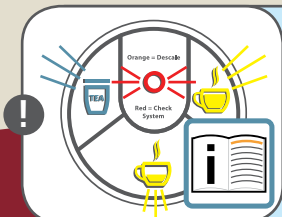


Make sure the lever is closed.

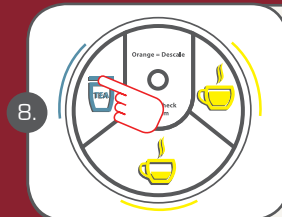
*Ensure there is no capsule in machine.



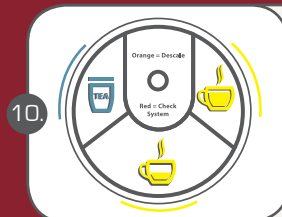
Place a large empty container (at least 250 ml) under the coffee dispensing spout.



NOTE: If the **Red Indicator Light** continues to blink and no water has been extracted, repeat step 6.

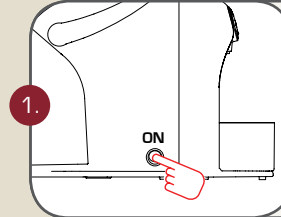


When all the button lights remain steadily lit, rinse by pressing the **Tea Button**. Press again to repeat rinse cycle.

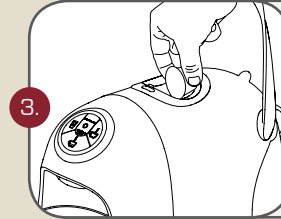


All button lights lit steadily, your machine is now ready to use.

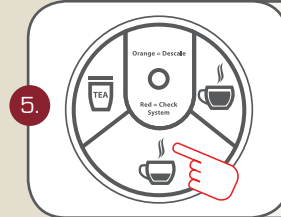
EVERYDAY OPERATION



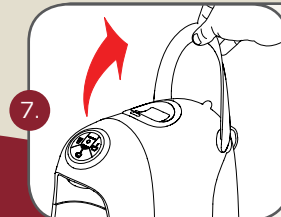
Switch the machine on using the **On/Off Switch**.
Wait about 1 min for machine to warm up.



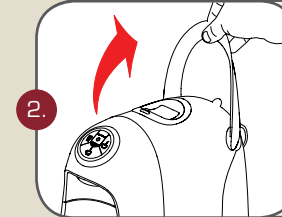
Insert the capsule, pressing it gently into place.



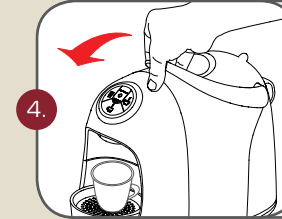
Press and release the button corresponding to the type of beverage you want as per **Diagram 1** above.



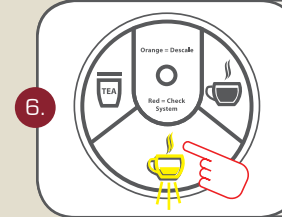
Raise the lever to eject the used capsule into the drawer. If capsule does not fall through, gently push down with a new capsule.



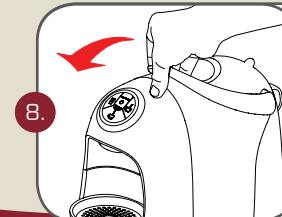
Raise the lever to open the capsule compartment.



Close the lever fully and place a cup or mug under the coffee dispensing spout.



The selected beverage button will blink and machine will stop dispensing on reaching the programmed quantity.



Close the lever.

NOTE: Between uses, to ensure optimum product delivery, remove used capsule from machine and rinse by pressing any button.

TIP: The quantities of beverage dispensed can be programmed. Please refer to chapter "Programming the quantity of coffee in a cup" in your Instruction Book.

For more information, tips and video tutorials please visit our website:
www.caffitalysystem.com.au

Caffitaly
system

COMPATIBLE WITH CAPSULE RANGES FROM

Gloria Jean's
COFFEES

Select

TWININGS
OF LONDON

Café MENU



See Instruction Book or Website for More Information - caffitalysystem.com.au

*Caffitaly Milk Frother sold separately.

MILK FROTHER & CAPSULE MACHINE BUTTONS

Frothing Paddle | 1 Click - heat & froth

Mixing Paddle | 2 Clicks - heat & mix

Frothing Paddle | 3 Clicks - cool & froth



Tea Button (Tea & Hot Water Only) - 120ml (Blue)

Double Espresso Button - 60ml (White)

Single Espresso Button - 30ml (White)

**Cold milk can be replaced with Frothed cold milk for cold drink suggestions using the Frothing paddle + 3 clicks.

ESPRESSO



> Select your favourite Caffitaly compatible capsule.

> Press the **Single Espresso Button** to extract a 30ml shot of coffee into your cup.

LONG BLACK



> Select your favourite Caffitaly compatible capsule. Press the **Single Espresso Button** to extract a 30ml shot of coffee into your cup.

> **Discard capsule** into capsule draw by raising handle, lower handle and top up your cup with hot water (**Tea Button**).

FLAT WHITE



> Select your favourite Caffitaly compatible capsule. Press the **Single Espresso Button** to extract a 30ml shot of coffee into your cup.

> Add 200ml of milk to your Caffitaly Milk Frother, use the **Mixing Paddle + two clicks** of the power button. Once finished, add to your coffee & enjoy.

LATTE



> Select your favourite Caffitaly compatible capsule. Press the **Single Espresso Button** to extract a 30ml shot of coffee into your cup.

> Add 150ml of milk to your Caffitaly Milk Frother, use the **Mixing Paddle + two clicks** of the power button. Once finished, add to your coffee & enjoy.

CAPPUCCINO



> Select your favourite Caffitaly compatible capsule. Press the **Single Espresso Button** to extract a 30ml shot of coffee into your cup.

> Add 100ml of milk to your Caffitaly Milk Frother, use the **Frothing Paddle + one click** of the power button. Once finished, add to your coffee & enjoy.

MOCHA



> Select your favourite Caffitaly compatible capsule. Press the **Single Espresso Button** to extract a 30ml shot of coffee into your cup. Insert a Gloria Jean's Coffees™ Classic Hot Chocolate Drink capsule. Press the **Double Espresso Button** to extract a 60ml shot into your cup.

> Add 50ml of milk to your Caffitaly Milk Frother, use the **Frothing Paddle + one click** of the power button. Once finished, add to your mocha blend & enjoy.

CARAMELATTE



> Use a Gloria Jean's Coffees™ Caramel Indulgence coffee capsule. Press the **Double Espresso Button** to extract a 60ml shot of caramel infused coffee into your cup.

> Add 150ml milk to your Caffitaly Milk Frother, use the **Mixing Paddle + one click** of the power button. Add to your caramel infused coffee & enjoy.

MOCHA CARAMELATTE



> Use a Gloria Jean's Coffees™ Classic Hot Chocolate drink capsule. Press the **Single Espresso Button** to extract a 30ml shot of hot chocolate into your cup.

> Insert a Gloria Jean's Coffees™ Caramel Indulgence coffee capsule. Press the **Single Espresso Button** to extract a 30ml shot of coffee into your cup. Add 150ml milk to your Caffitaly Milk Frother, use the **Mixing Paddle + one click** of the power button. Add to your choc/caramel infused coffee stir & enjoy.

CLASSIC HOT CHOCOLATE



> Use a Gloria Jean's Coffees™ Classic Hot Chocolate drink capsule. Press the **Double Espresso Button** to extract a 60ml shot of chocolate into your cup.

> Add 50ml of milk to your Caffitaly Milk Frother, use the **Frothing Paddle + one click** of the power button. Add to your chocolate drink & enjoy.

ICED COFFEE



> Select your favourite Caffitaly compatible capsule. Press the **Single Espresso Button** to extract a 30ml shot of coffee into your cup.

> Add ice to glass + coffee, cold milk** & ice cream (if desired) & enjoy.

ICED MOCHA



> Select your favourite Caffitaly compatible capsule. Press the **Single Espresso Button** to extract 30ml of coffee into your cup.

> Insert a Gloria Jean's Coffees™ Classic Hot Chocolate drink capsule. Press the **Double Espresso Button** to extract a 60ml shot of chocolate into your cup.

> Add ice to glass + coffee, cold milk** & ice cream (if desired) & enjoy.

ICED CHOCOLATE



> Use a Gloria Jean's Coffees™ chocolate drink capsule. Press the **Double Espresso Button** to extract a 60ml shot of chocolate into your cup.

> Add ice to glass + coffee, cold milk** & ice cream (if desired) & enjoy.

Suggestions are based on 180ml - 200ml cup sizes, for larger cups/ mugs or for increased strength & flavour, adjust both capsule quantity & milk quantity to desired amount, within capability of both capsule and milk systems. All drinks may also require sweetener as desired.