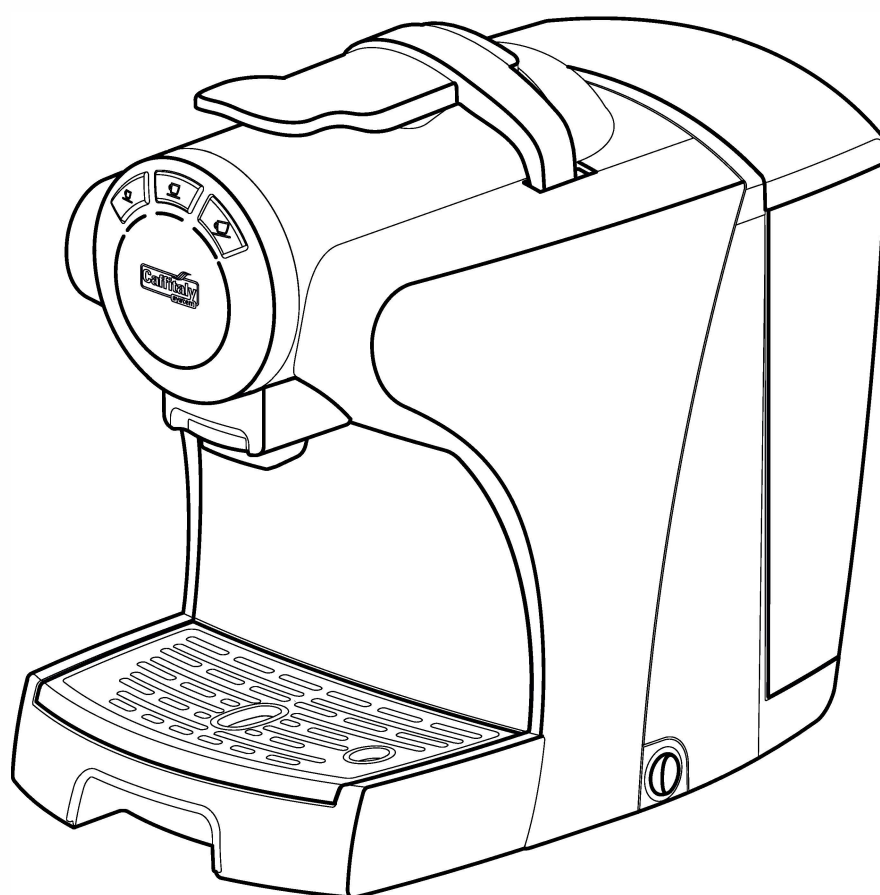


MODEL S05



INSTRUCTION MANUAL

Imported by Roasting Australia Pty Limited

11 Hoyle Avenue, Castle Hill, NSW 2154

Phone: AUS 02 9846 0307

NZ: 0800 450 894

email: caffitalysystem@rfg.com.au

www.caffitalysystem.com.au



Introduction

●	Warning symbols	3
●	Your Caffitaly System contact	3
●	Important Safeguards	4
●	Description of machine components	6

Installation

1	First use or after a long period of disuse	7
2	Turning on the appliance	8
3	General operating indications	9
4	Adjusting the cup/mug height	11

Dispensing the product

5	Dispensing coffee	12
6	Correct use of the buttons	13
7	Programming the quantity of coffee in a cup	14

Cleaning and Maintenance

8	Saving energy	15
9	Daily maintenance	16
10	Descaling	17

Miscellaneous

11	Troubleshooting	21
12	Technical data	22

Dear Customer,

Thank you for having chosen our product and for your confidence in our company. You can savour your favourite hot beverages at any time of the day with our appliance by choosing one of the capsules that Caffitaly offers you. For example: an espresso, a cocoa-flavoured beverage or a tea will be ready in just a few seconds.

Warning symbols



CAUTION

This is the safety warning symbol. It is used to call your attention to possible risks of personal injury. Abide by the safety messages provided in order to avoid possible injury or death.



NOTE

This is the symbol used to highlight some actions that will optimise use of the appliance.



Not dishwasher safe



Maintenance tips



This symbol is used to highlight a blinking **WHITE** light indication.

This symbol is used to highlight a **YELLOW** or **RED** light indication.

Your Caffitaly System contact

Roasting Australia Pty Limited
11 Hoyle Avenue. Castle Hill. NSW 2154
Phone: AUS 02 9846 0307
NZ: 0800 450 894
email: caffitalysystem@rfg.com.au
caffitalysystem.com.au

INTENDED USE

This appliance is designed for domestic use and similar purposes, for example: staff kitchen areas in shops, offices and other workplaces; in hotels, farm lodges, motels, Bed & Breakfasts and other residential environments.

IMPORTANT SAFEGUARDS

When using electrical appliances, basic safety precautions should always be followed to reduce the risk of fire, electric shock, and/or injury to person, including the following:

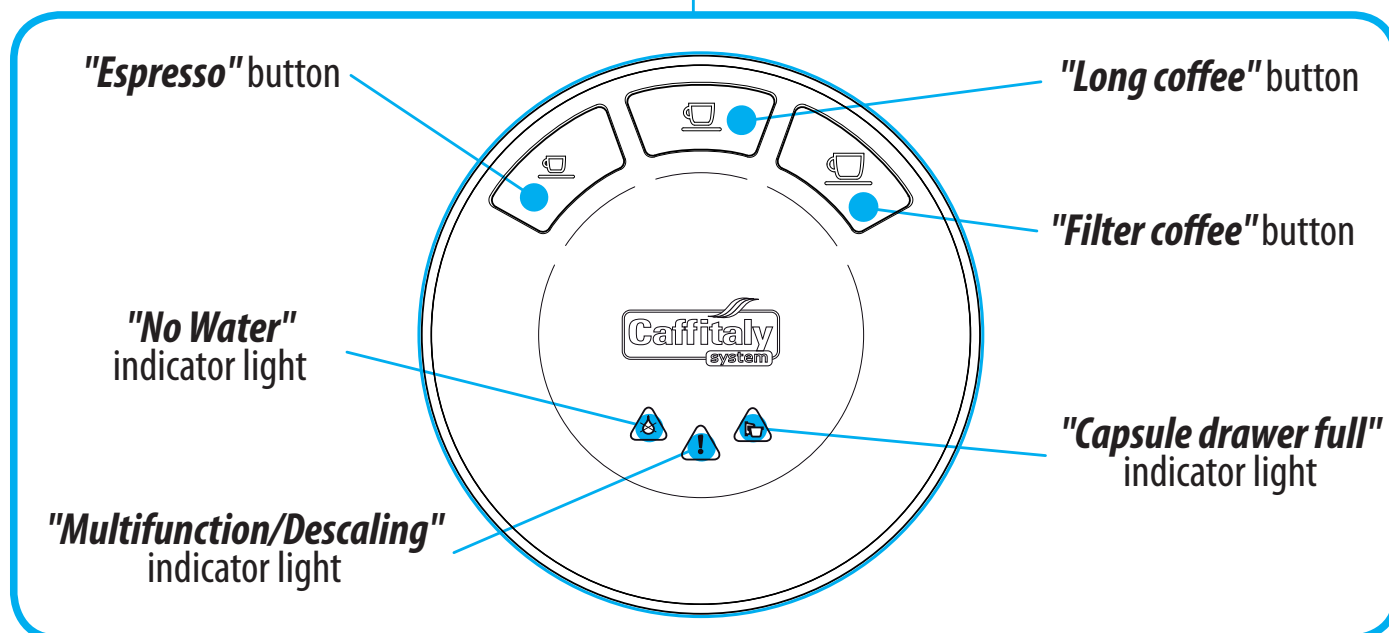
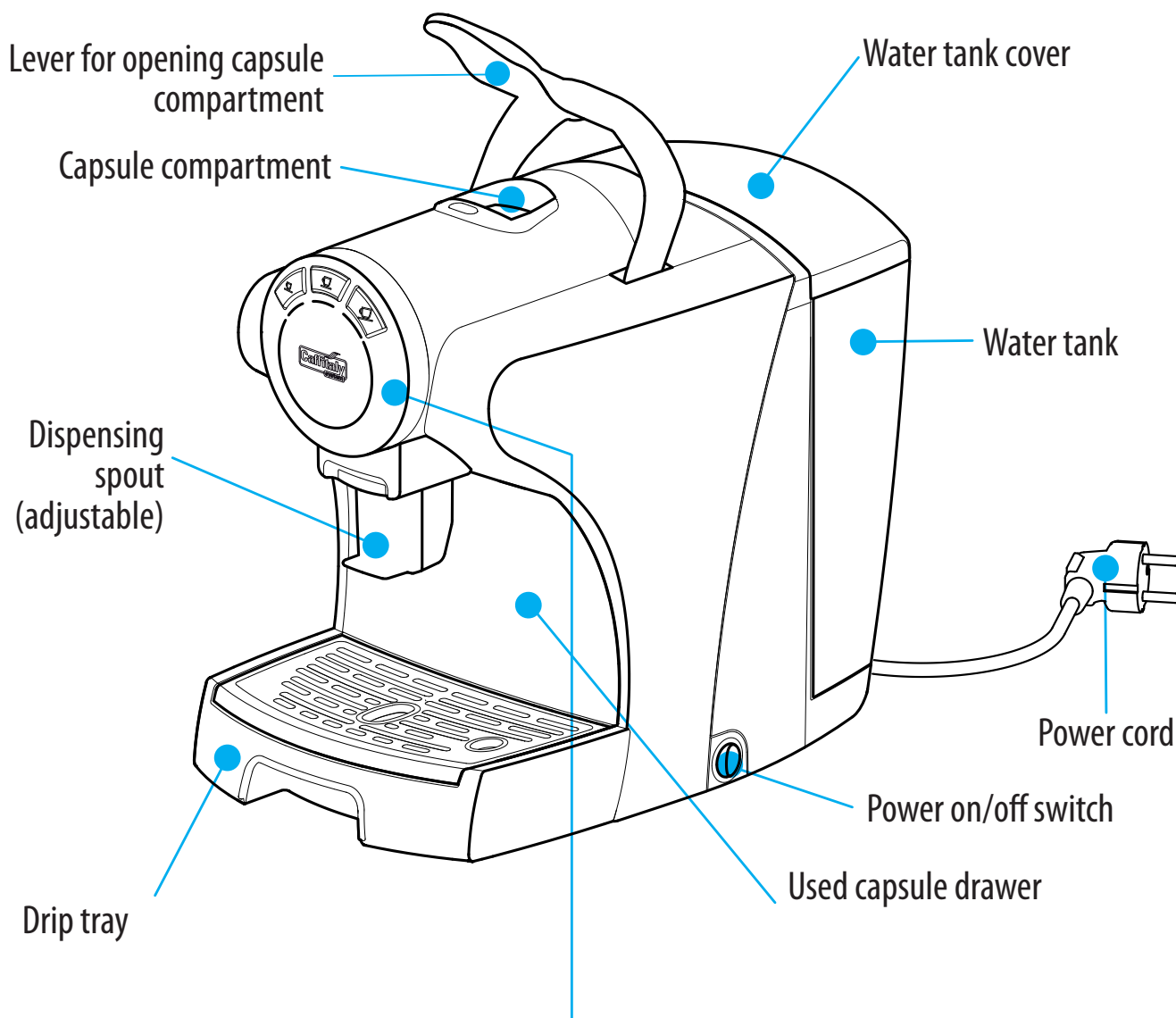
1. Read all instructions and information in this instruction book and any other literature included in the carton referring to this product before operating or using this appliance.
2. Do not touch hot surfaces (i.e. steam wand). Use handles or knobs.
3. To protect against fire, electric shock, and personal injury, do not place cord, plugs, or appliance in water or other liquid.
4. This appliance must be kept out of the reach of children.
5. Unplug from outlet when not in use and before cleaning.
6. Allow to cool before putting on or taking off parts, and before cleaning the appliance.
7. The use of accessory attachments not recommended by the appliance manufacturer may result in fire, electric shock, or personal injury.
8. Do not use outdoors.
9. Do not let cord hang over edge of table or counter, or touch hot surface.
10. Do not place on or near a hot gas or electric burner, or in a heated oven.
11. The packaging elements (plastic bags, etc.) must not be left within reach of children as they are potential sources of danger.
12. Do not operate any appliance with a damaged cord or plug, if the appliance malfunctions, or has been damaged in any manner. Return appliance to an authorized service facility for examination, repair, or adjustment.

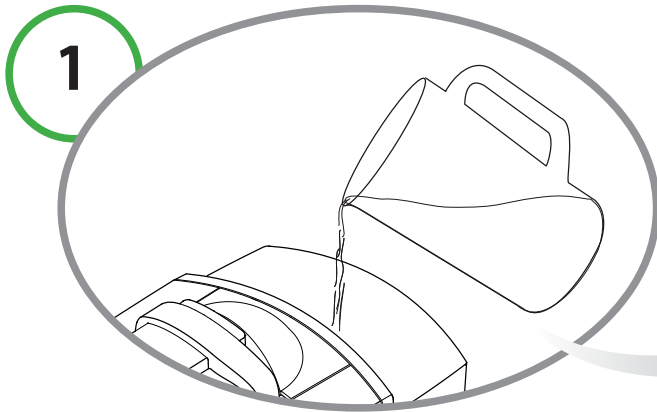
... Continued

13. Do not use if the water tank is not filled.
14. Always use cold water. Warm water or other liquids could cause damage to the appliance.
15. When plugging in the machine, always turn appliance "OFF", attach power cord to the machine first, then plug cord into wall outlet. To disconnect, always turn appliance "OFF", then remove plug from wall outlet.
16. Use extreme caution when using hot steam.
17. Do not use appliance for other than intended use.
18. This appliance is not intended for use by persons (including children) with reduced physical, sensory, or mental capabilities, or lack of experience and knowledge, unless they have been given supervision or instruction concerning use of the appliance by a person responsible for their safety.

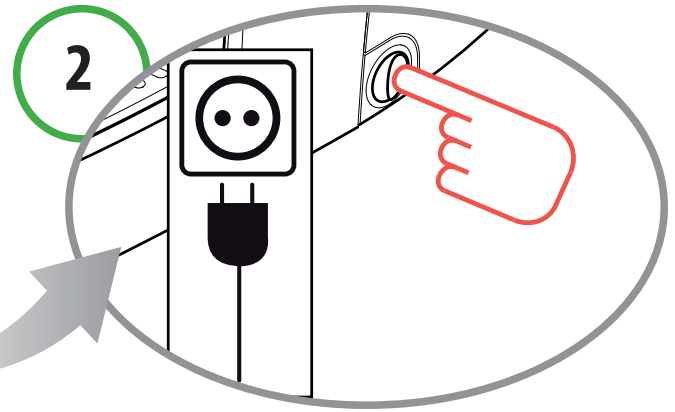
Children should be supervised to ensure that they do not play with the appliance.

Description of machine components

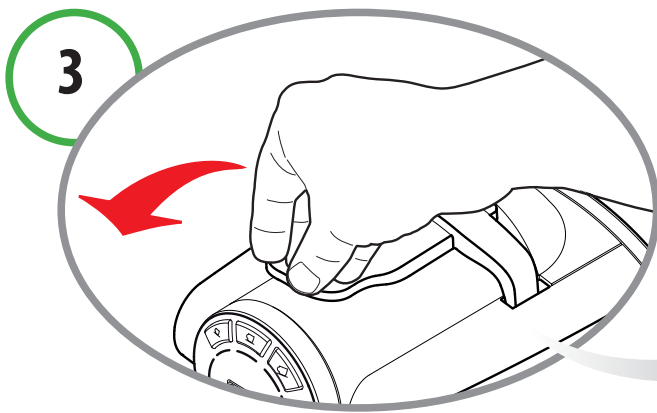




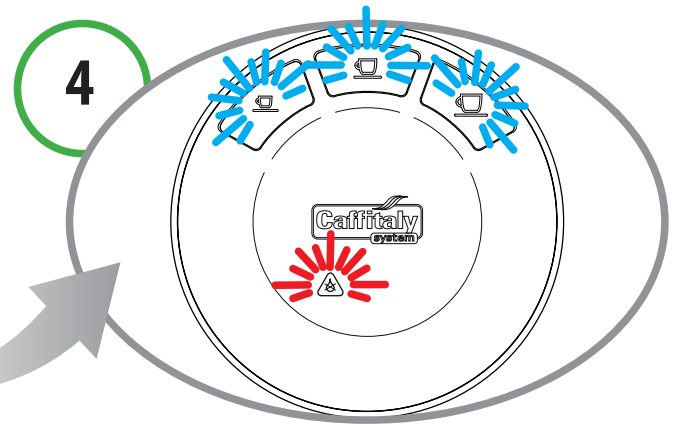
Fill the tank with fresh, still water.



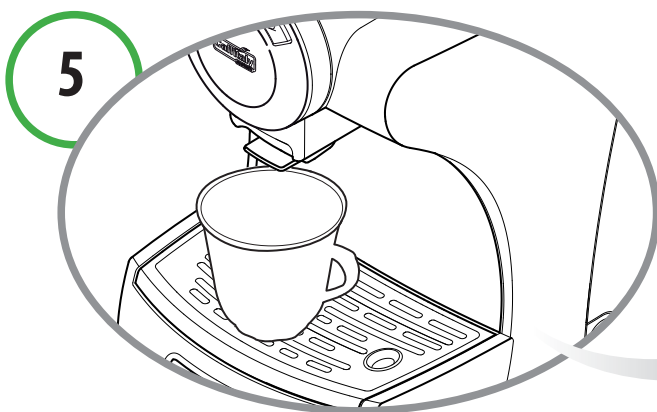
Plug in the appliance and turn it on.



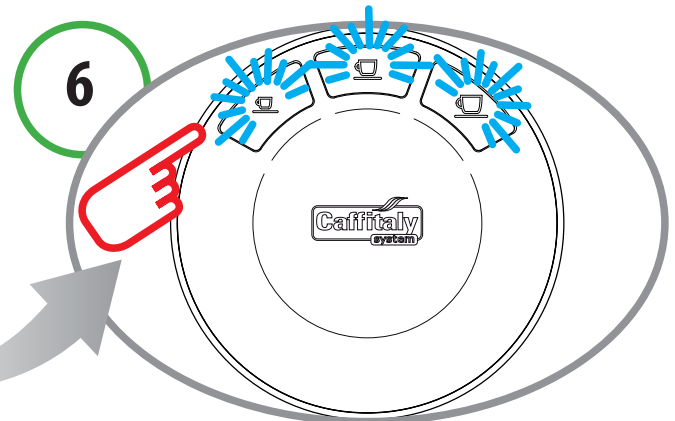
Make sure the lever is closed.



Together with the indicator light for the dispensing buttons (**espresso**, **long coffee**, **filter coffee**) the **RED no water** indicator light also blinks alternately.



Place a large container (at least 250 ml) under the coffee dispensing spout.



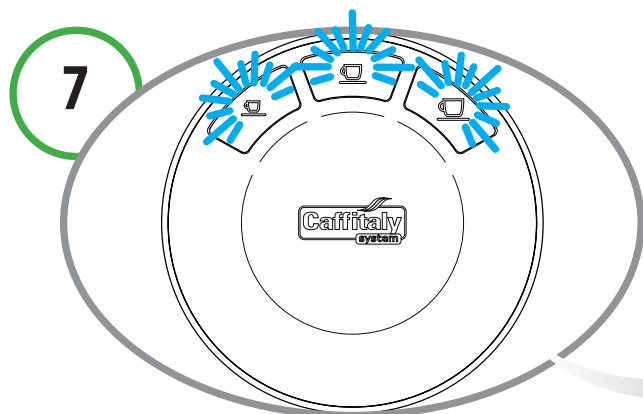
Press one of the buttons (**espresso**, **long coffee**, **filter coffee**). Wait for the machine to complete the priming cycle and fill with water. The **no water** indicator light switches off.



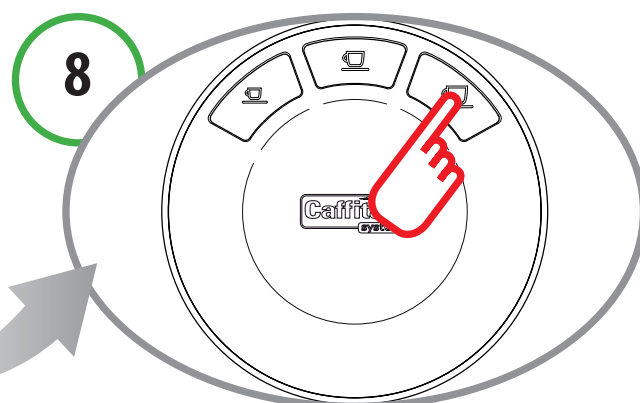
NOTE:

If the buttons and the **no water** indicator light continue to blink after the filling procedure has ended, repeat the steps in point 6.

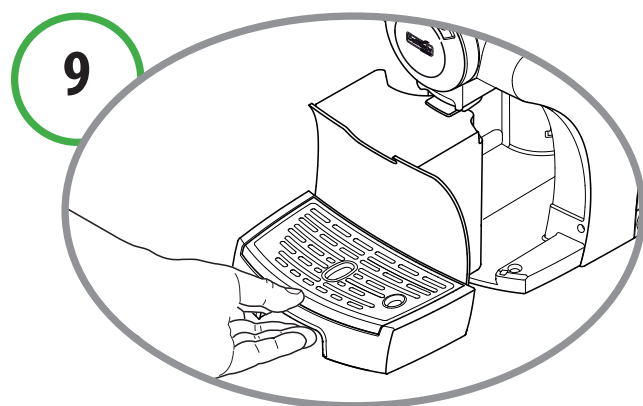
2 Turning on the appliance



The buttons (**espresso**, **long coffee**, **filter coffee**) blink at the same time; the machine is warming up.

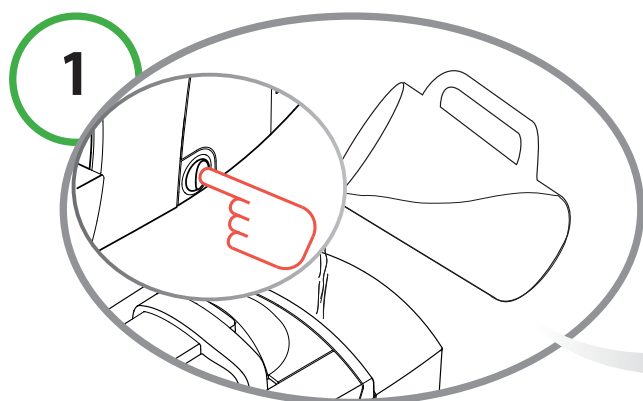


When the buttons turn on and remain steadily lit, rinse by pressing the **filter coffee** button. Press the button again to rinse a second time. Wait for the machine to complete the rinse cycle.

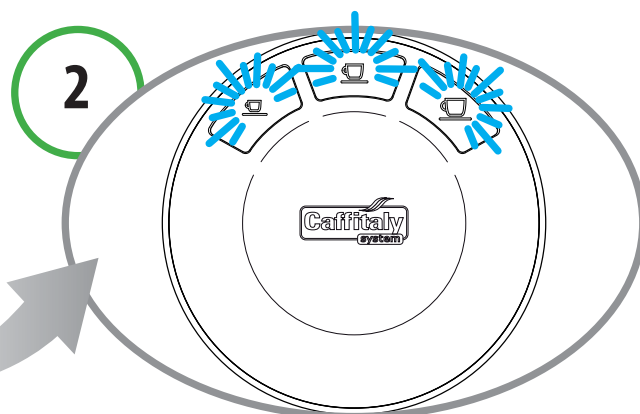


At the end of this operation, empty out the water from the used capsule drawer.

2 Turning on the appliance

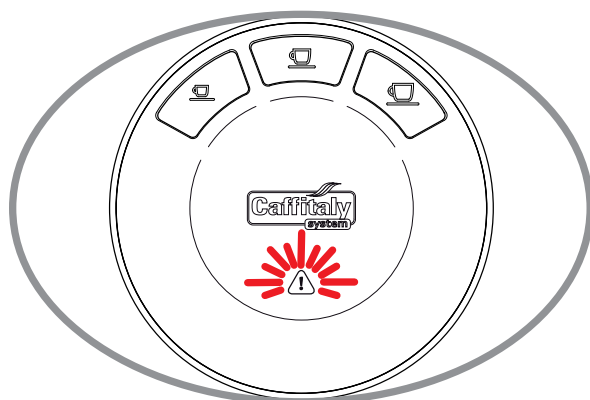


Fill the tank with fresh, still water. Turn on the appliance.



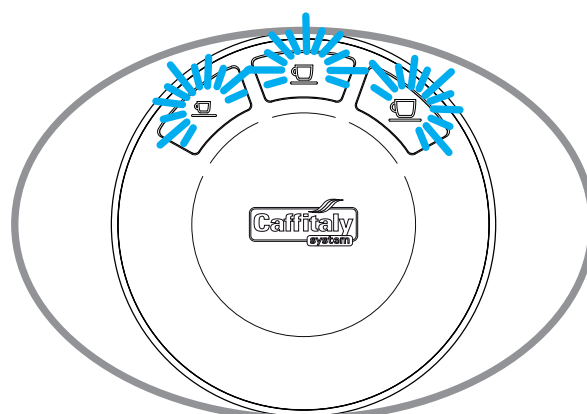
The buttons blink at the same time; the machine is warming up. When the buttons turn on and remain steadily lit, the appliance is ready for use.

DESCALING SIGNAL



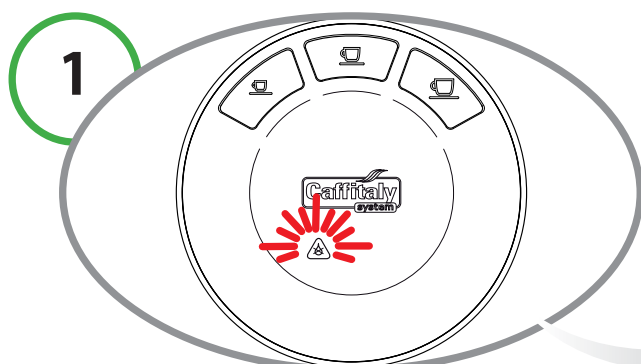
When the **descaling** blinks **YELLOW** and the machine emits 3 beeps, it is advisable to perform the descaling cycle. (See Ch. 10)

HEATING

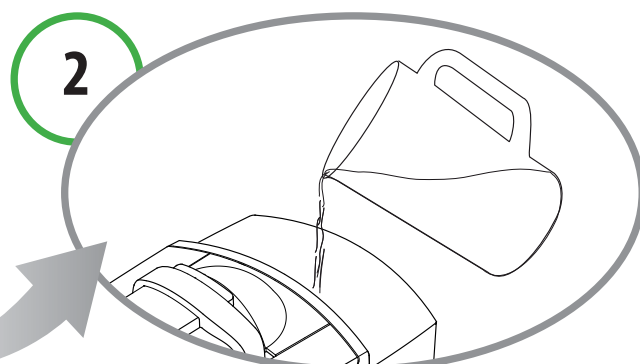


The buttons blink at the same time.

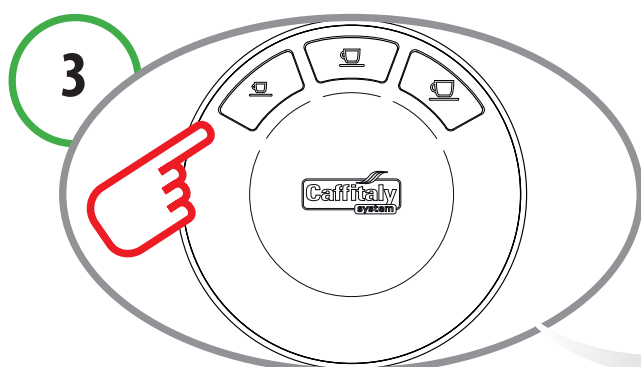
WHEN THE WATER RUNS OUT DURING OPERATION



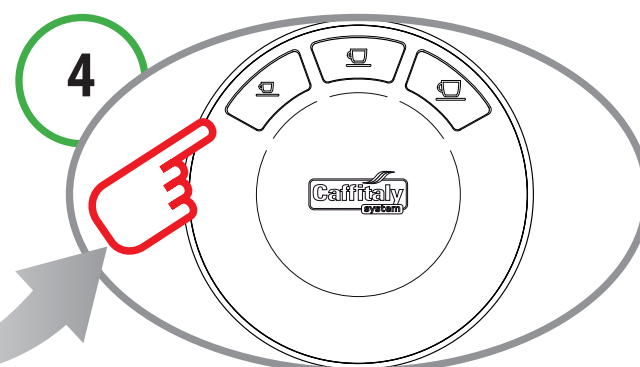
The water tank is empty when the **no water** indicator light blinks **RED** and the appliance emits 3 beeps.



Fill the tank with fresh, still water.

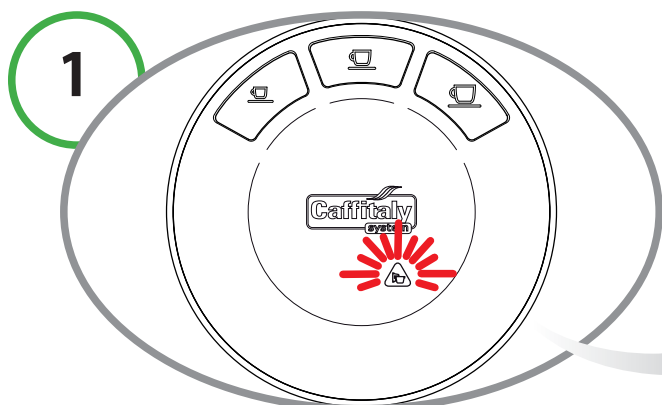


Press one of the buttons (**espresso, long coffee, filter coffee**). Wait for the machine to complete the priming cycle and fill with water.



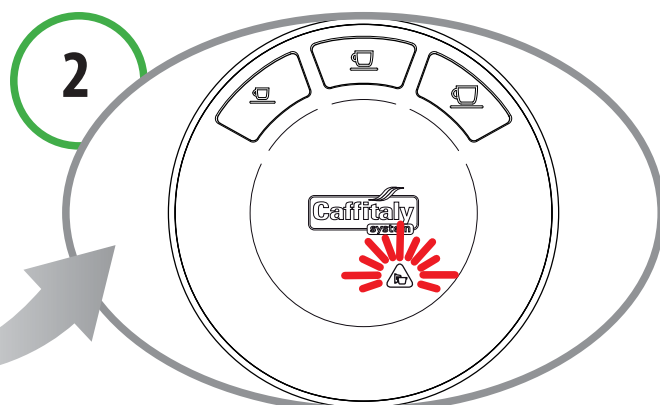
When the buttons turn on and remain steadily lit, the appliance is ready for use.

1ST GROUNDS DRAWER SIGNAL



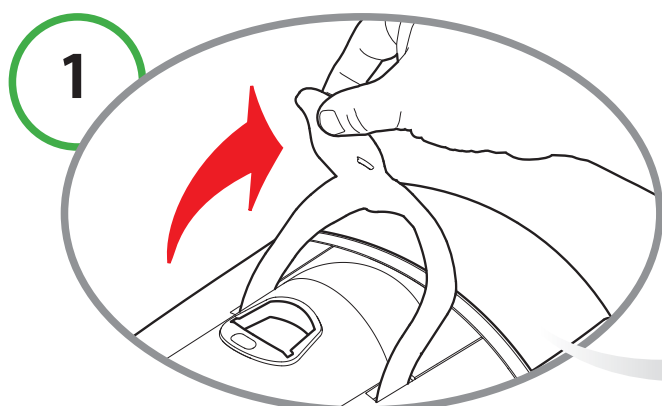
When the **capsule drawer full** blinks **RED**, it is advisable to empty the used capsule drawer.

2ND GROUNDS DRAWER SIGNAL - DISABLING

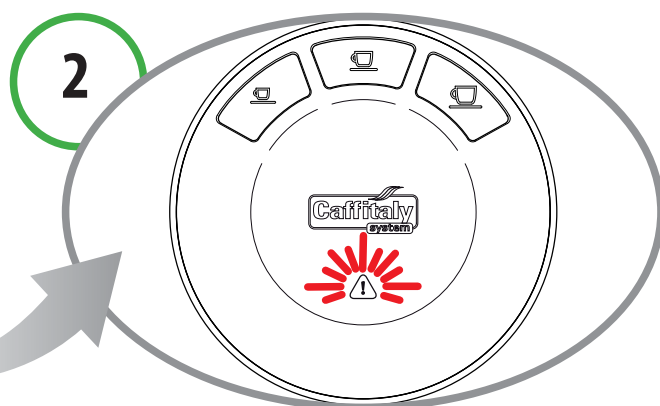


When the **capsule drawer full** turns **RED** and remains steady, the machine stops running and you **MUST** empty the used capsule drawer. This process should take place while the **machine is on**.

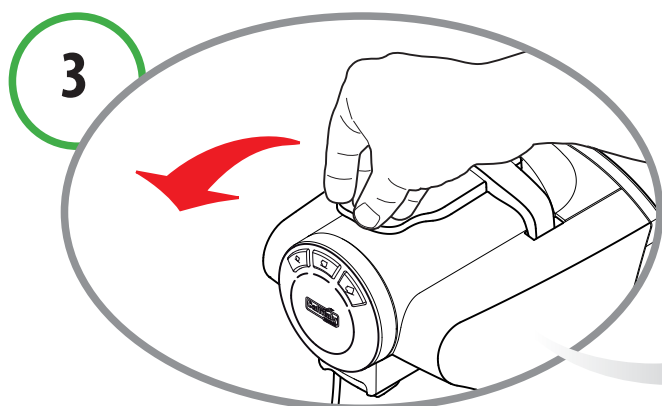
IF THE LEVER IS RAISED



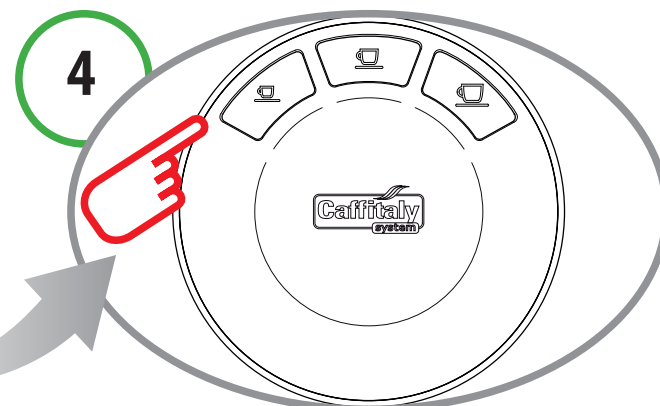
If the lever is raised while a product is being dispensed.



The **multifunction** blinks **RED** and a beep is emitted. The appliance will immediately stop dispensing.

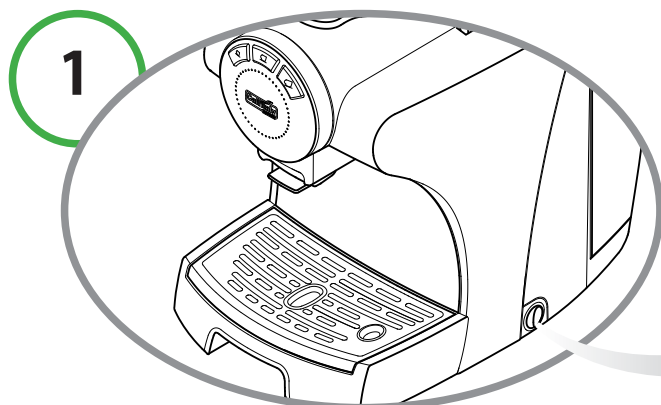


Close the lever.

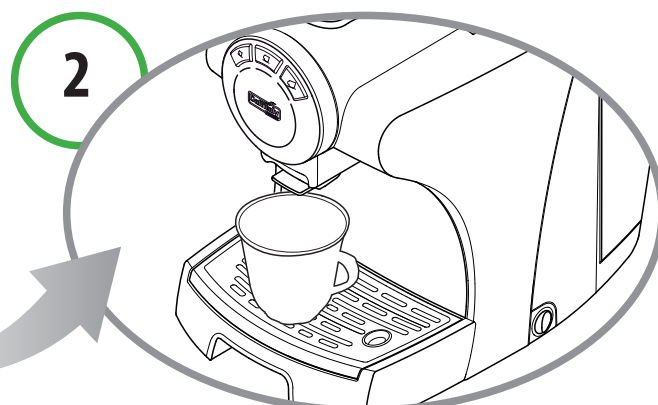


Press a button to reset the alarm. The appliance is ready for use.

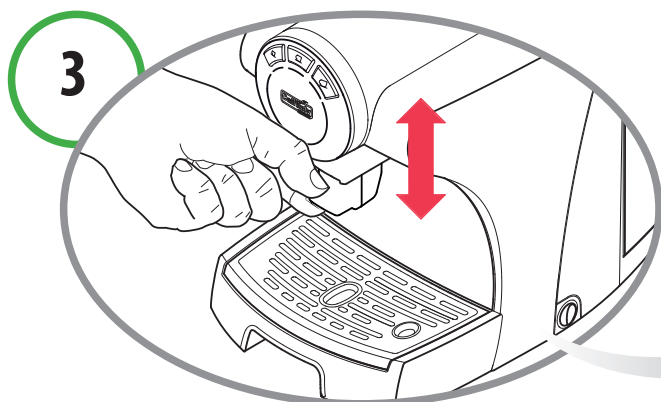
Adjusting the cup/mug height 4



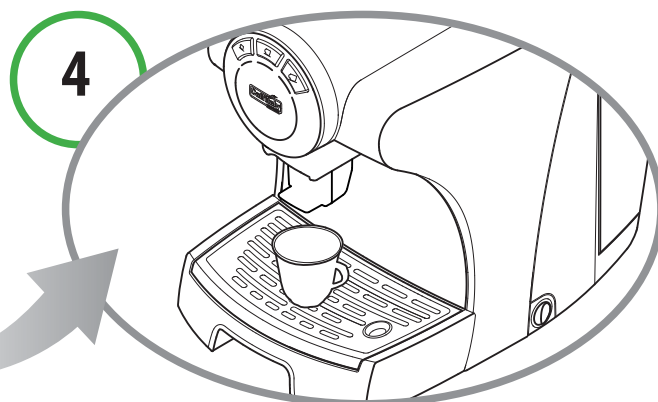
The appliance can be adjusted for the use of mugs or espresso cups.



The appliance is initially set for the use of large cups.

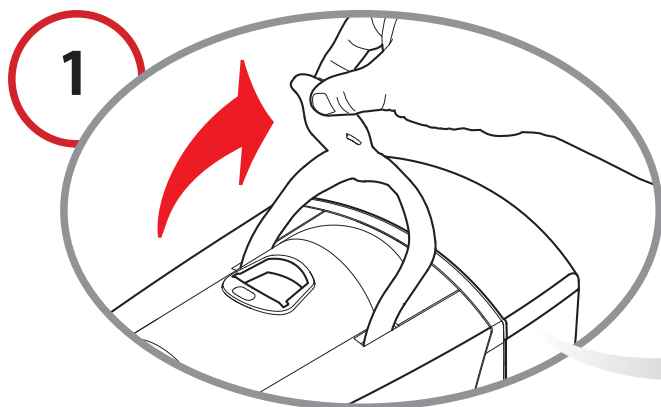


To use espresso cups, lower the end part of the dispensing spout.

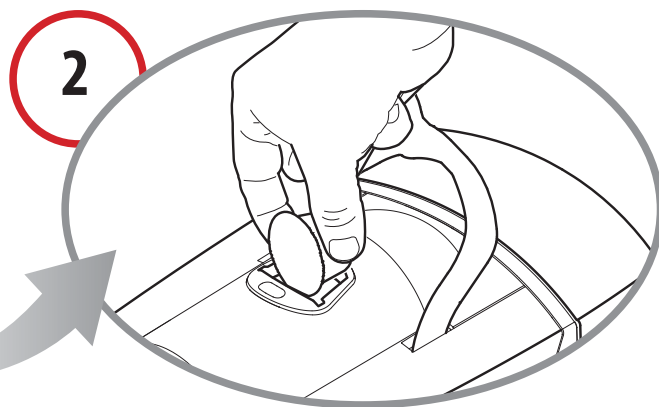


In this way you can obtain the best results when using small espresso cups.

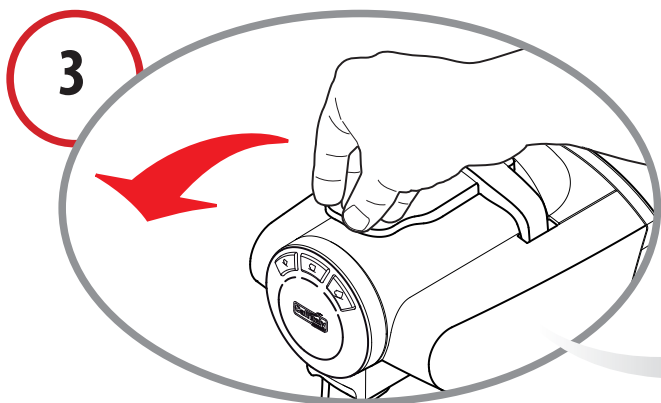
5 Dispensing coffee



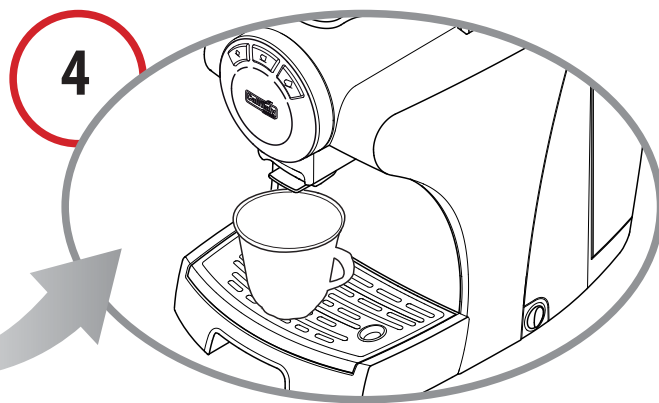
Raise the lever to open the capsule compartment.



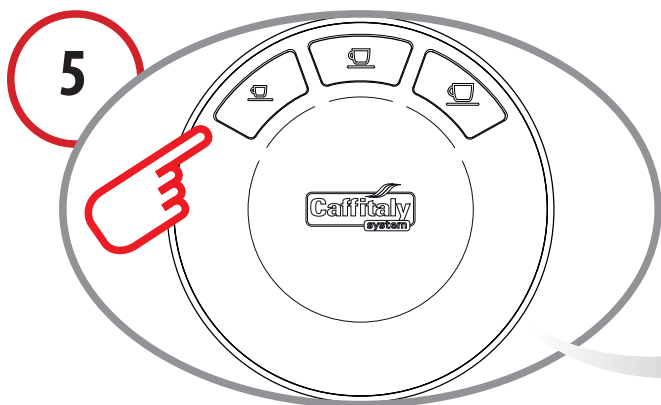
Insert the capsule, pressing it gently into place.



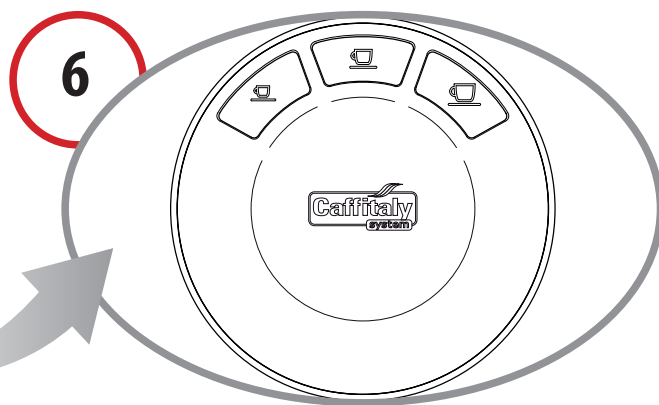
Close the lever fully.



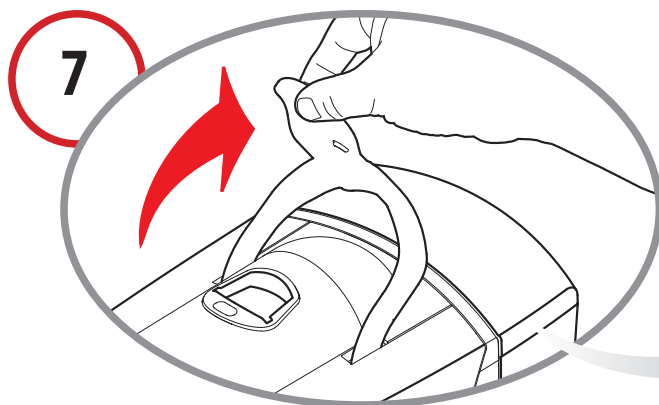
Place a cup or mug under the coffee dispensing spout.



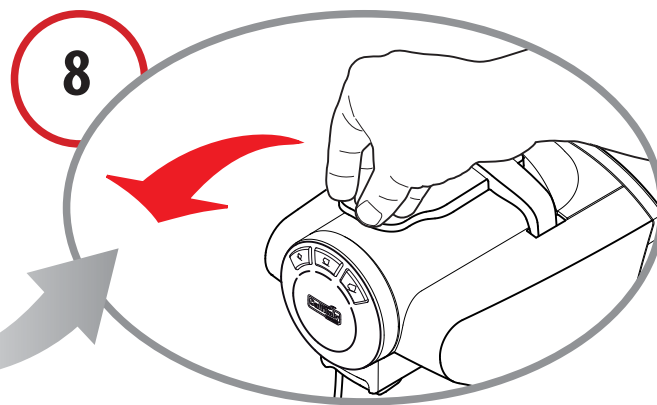
Press and release the button corresponding to the type of coffee you want.



The selected coffee button will blink. The appliance will stop dispensing on reaching the programmed quantity and will emit a beep.



Raise the lever to eject the used capsule into the drawer.



Close the lever.



NOTE:

The **quantities** of coffee dispensed can be **programmed** according to personal taste and the size of the cups or mugs used. Please refer to chapter 7 for programming instructions.

6 Correct use of the buttons

To dispense Espresso or Caffè crema, use the **“Espresso”** or **“Long coffee”** buttons only (1st and 2nd from the left respectively, lit up in **WHITE**). The same buttons, depending on the amount required, should also be used to dispense barley capsules, cocoa and milk.

The **“Filter coffee”** button (3rd from the left, lit in **WHITE**) should only be used for “Filter coffee” or “Americano” beverages (very light). This button can also be used in conjunction with tea and chamomile capsules, and general infusions.

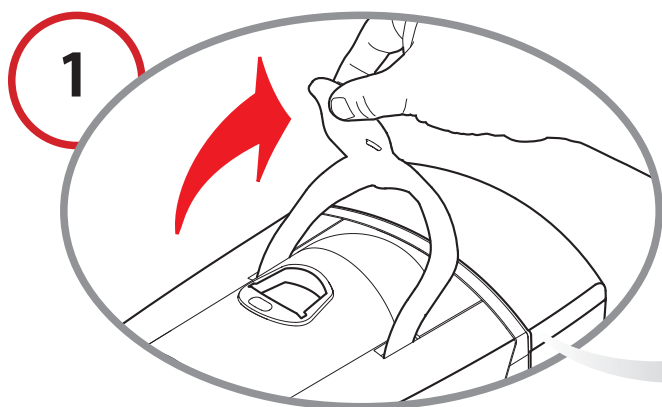
Do not use the **“Filter coffee”** button for espresso or intensely-flavoured coffee: when operating in this mode, the machine is actually set to a low pressure which reduces foam, weakens the taste of the coffee and could cause interruptions in flow as the product is dispensed.”



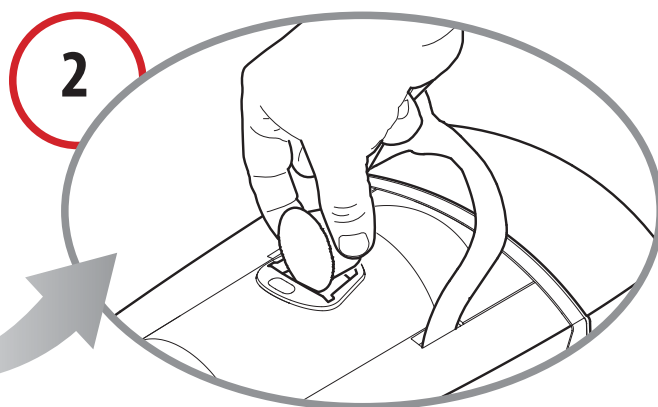
NOTE:

Traces of the product just dispensed may remain in the circuit of the machine. When switching from one product to another, in order to fully enjoy the flavour of the beverage we suggest rinsing the machine by pressing the coffee button as if to dispense a coffee without inserting a capsule.

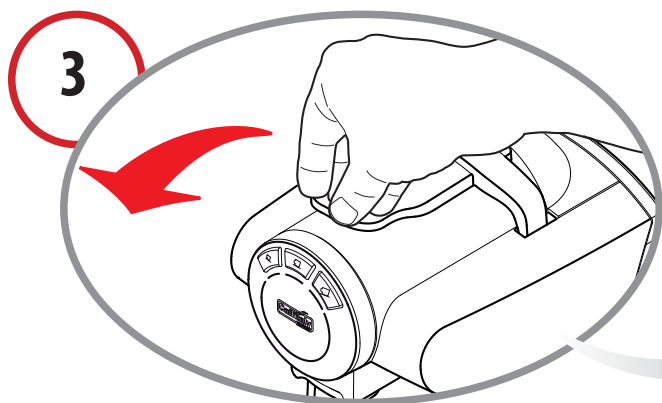
7 Programming the quantity of coffee in a cup



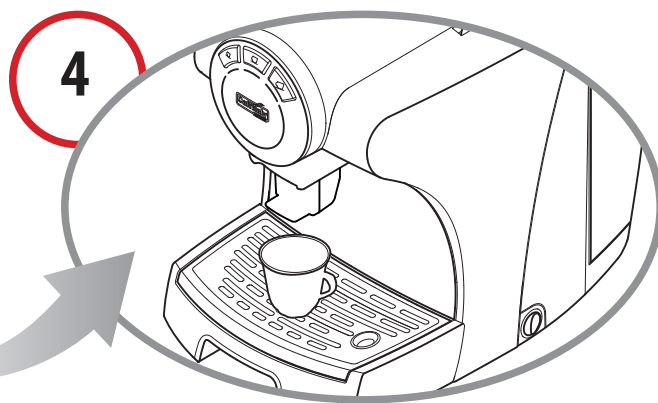
Raise the lever to open the capsule compartment.



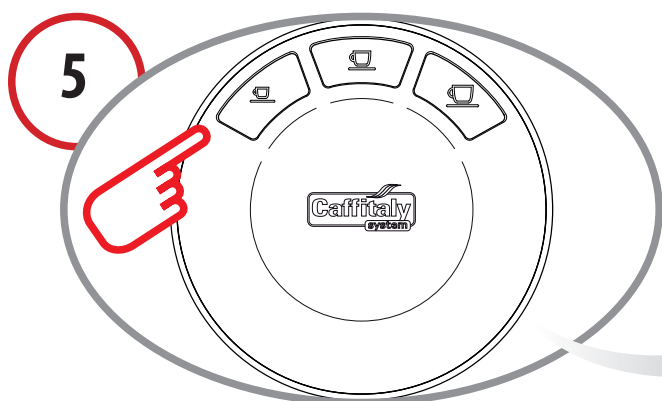
Insert the capsule, pressing it gently into place.



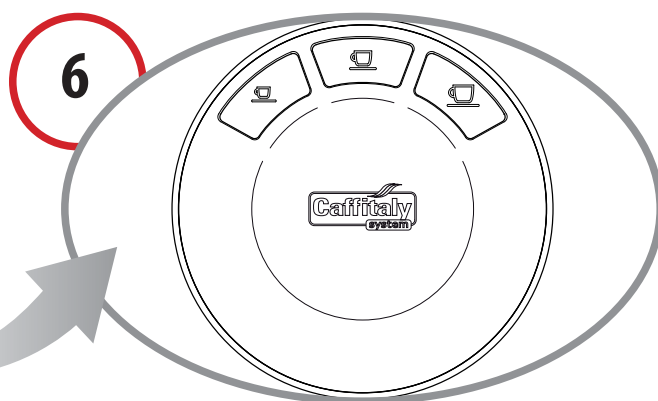
Close the lever fully.



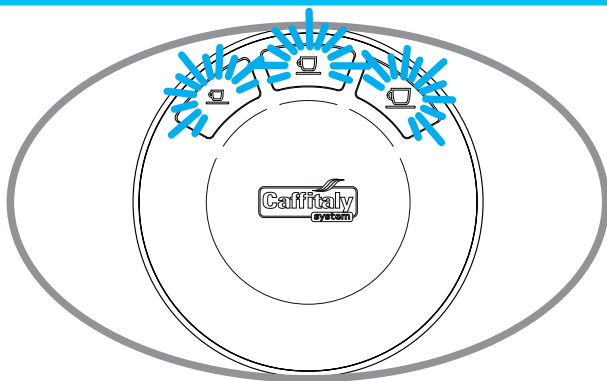
Place a cup or mug under the coffee dispensing spout depending on the type of coffee you wish to program.



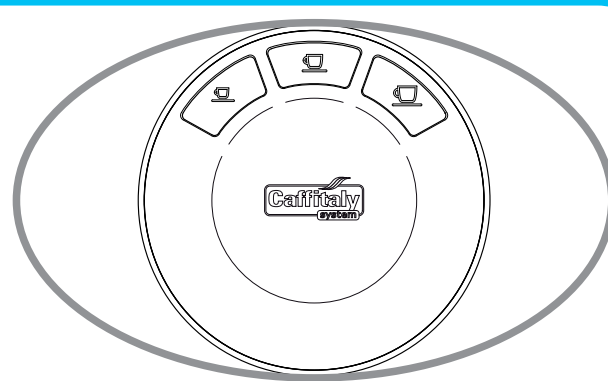
Press and hold the desired coffee button.



On reaching the desired amount of coffee, release the button. Now the button is programmed. **The quantity of coffee dispensed may be programmed, from a minimum of 30 ml to a maximum of 250 ml.**

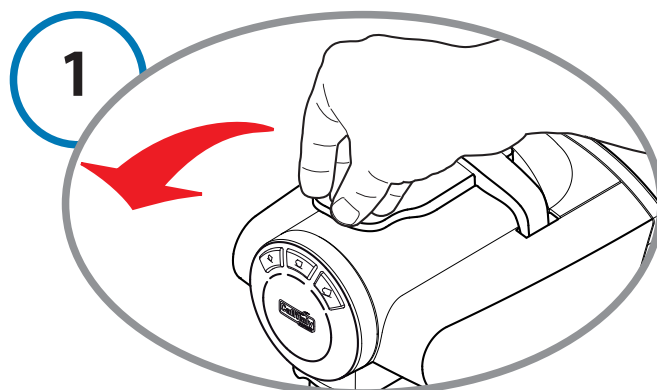


The machine will automatically reduce consumption one hour after the last use. The buttons (**espresso**, **long coffee**, **filter coffee**) will slowly and sequentially blink with a **WHITE** light.

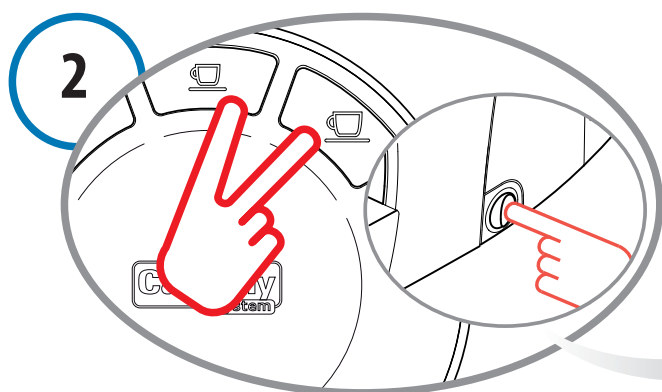


To restore normal operating conditions, press any button or raise the lever. The appliance will start warming up. The buttons will be steadily lit **WHITE** when the appliance is ready for use.

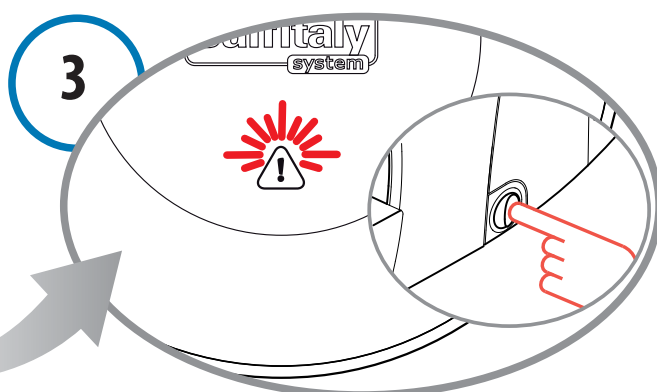
To deactivate (or reactivate) the function saving energy, proceed as follows:



Make sure the lever is lowered.



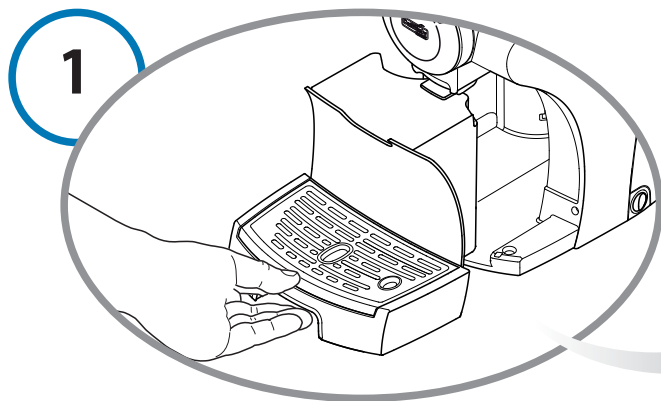
Press and hold the buttons (**long coffee** and **filter coffee**) and turn on the machine by pressing the power on/off switch.



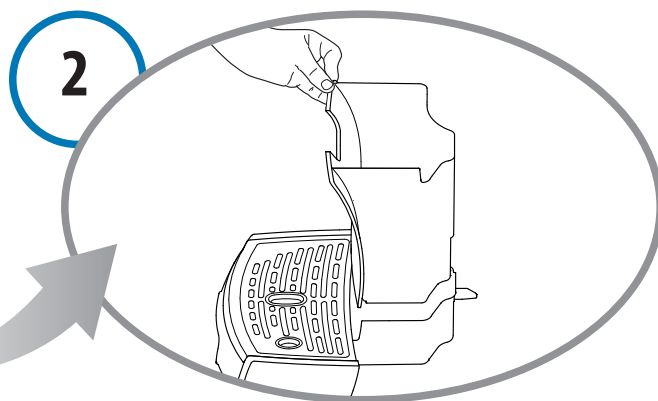
The **multifunction** indicator light will blink three times in **RED** and three beeps will be emitted to confirm deactivation of the "Energy Saving" function. When the function is reactivated, the **multifunction** indicator light will blink twice **RED** and two beeps will be emitted.
Turn off the machine, then turn it back on.



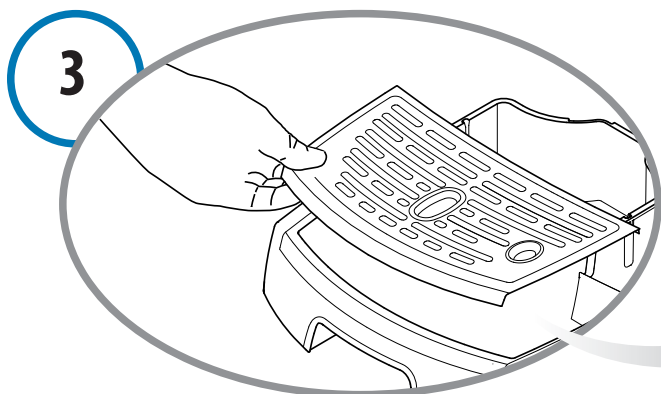
The **capsule drawer full** indicator light may turn on during normal operation. The operation must be performed when the appliance is on. The count of the capsules deposited in the drawer is not reset if the capsule drawer is emptied when the **appliance is off**. This is why the indicator light might turn on even if the drawer is almost empty.



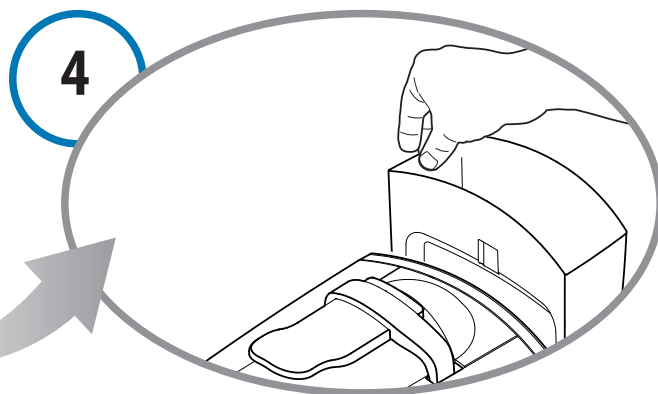
Remove the drip tray and used capsule drawer.



Lift the capsule drawer; empty and rinse it.



Remove the grid. Empty the drip tray and rinse it out with water.



Remove the water tank. Empty and rinse out the tank. The water tank is NOT dishwasher safe.

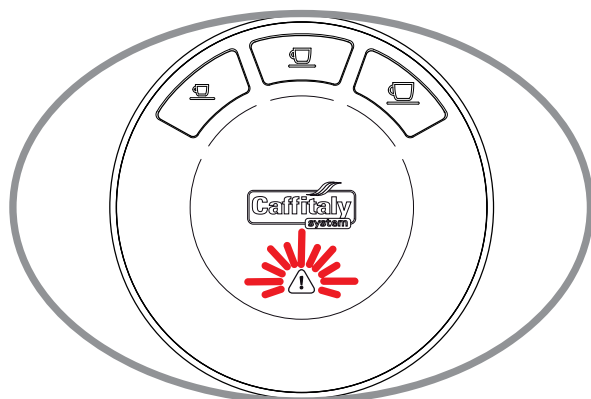


Use a soft cloth and a neutral detergent to clean the surfaces of the appliance. Do not use jets of water to clean the appliance.



The plastic parts of the appliance are not dishwasher safe.

DESCALING SIGNAL



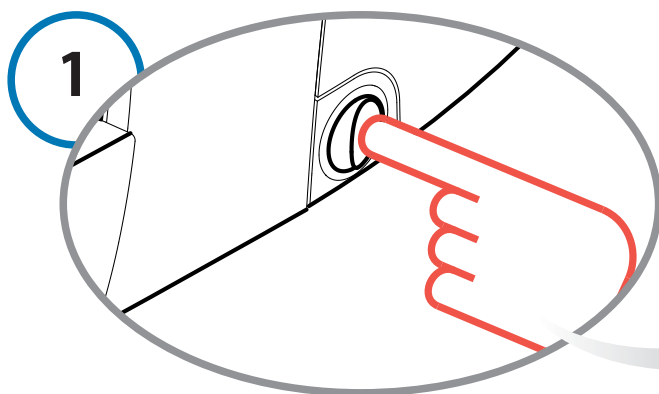
The machine features an advanced program that monitors how much water is used to dispense beverages. This measurement provides the user with indications as to when the machine needs to be descaled. Specific indications are given in chapter 3.

When the **descaling** blinks **YELLOW** and the machine emits 3 beeps, it is advisable to perform the descaling cycle, as illustrated below.

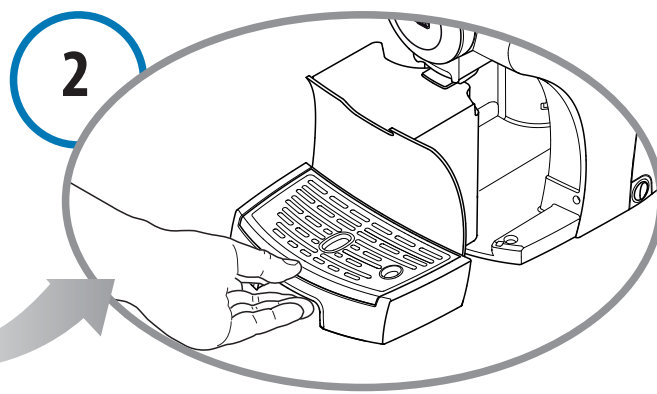
It is advisable to use the Caffita System descaling agent. This has been studied to comply with the technical characteristics of the appliance, in full observance of consumer safety. The descaling agent must be disposed of in compliance with manufacturer instructions and/or with current regulations in force in the country where the appliance is used.



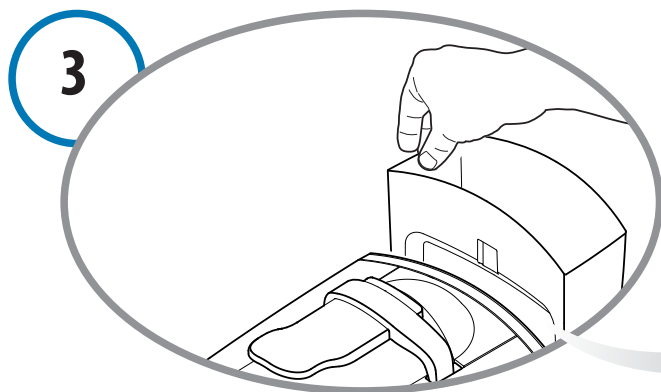
CAREFULLY read the directions for use on the package of the descaling agent. Avoid contact with eyes, skin and machine surfaces. Switch the appliance off during descaling, and do not lift the lever. A person must be present during the operation.
Do not use vinegar: it could damage your appliance!



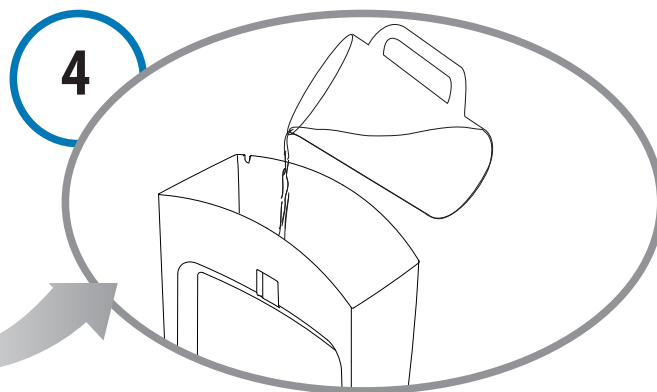
Turn off the machine.



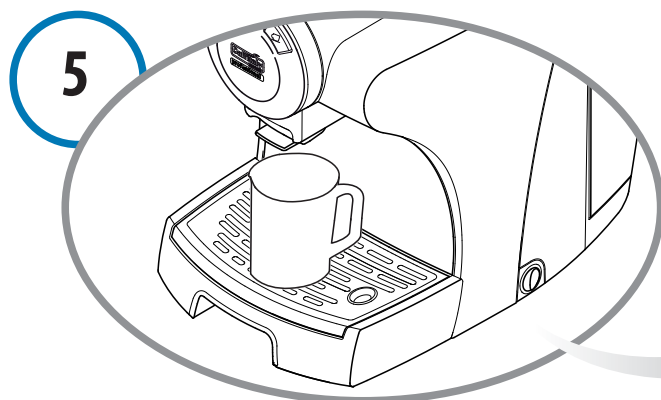
Empty and rinse out the used capsule drawer and drip tray.



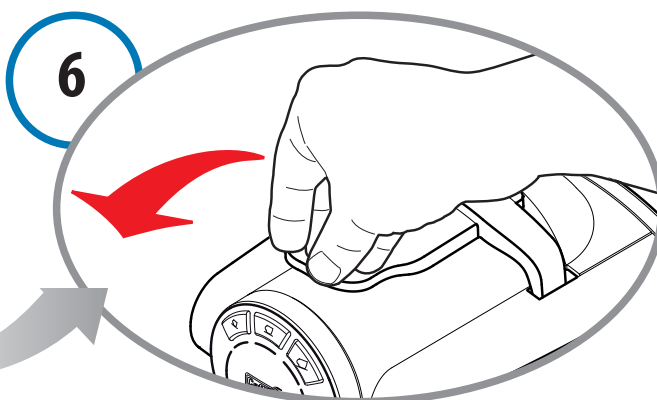
Remove and empty the water tank.



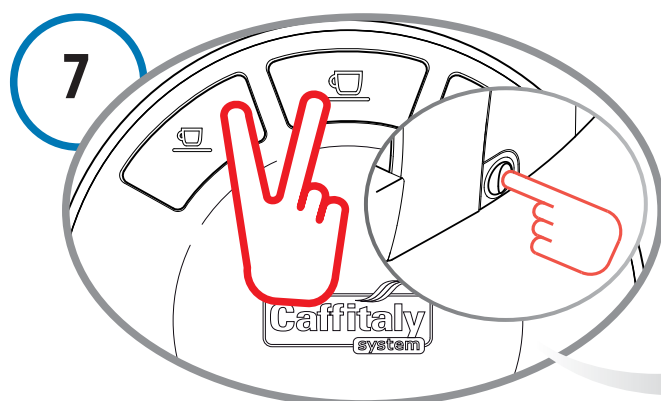
Mix the contents of one bottle of Caffitaly with approximately 750 cc water (a total volume of 1 litre) and pour into the tank.



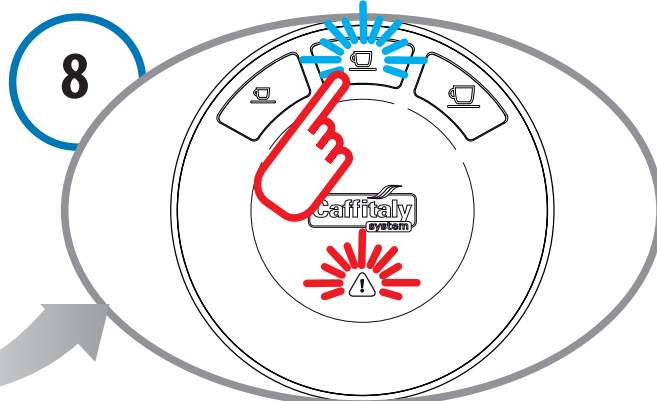
Place a container (at least 1 litre) under the coffee dispensing spout.



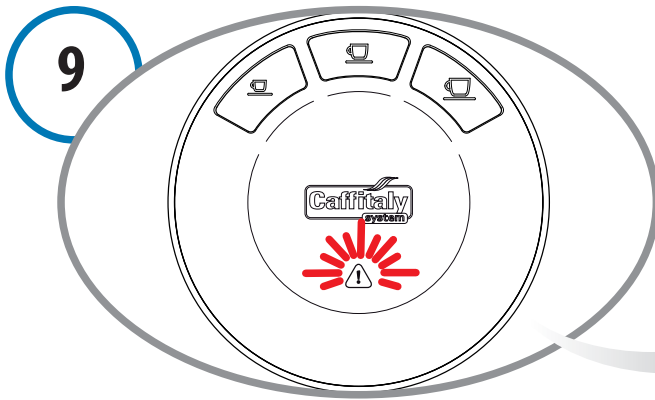
Make sure the lever is lowered and there are no capsules inside the capsule compartment.



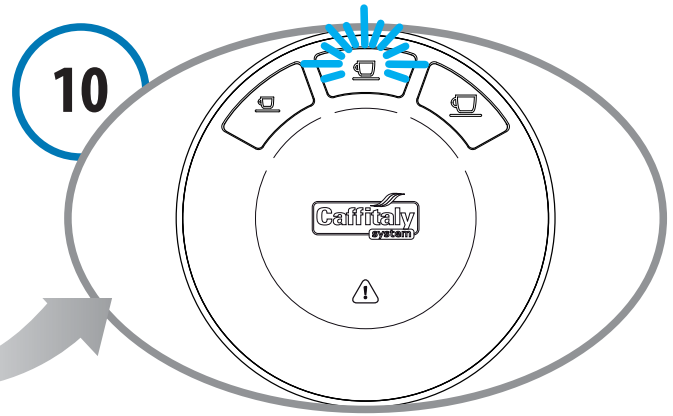
Press and hold the buttons (**espresso** and **long coffee**) and at the same time turn on the machine by pressing the power on/off switch.



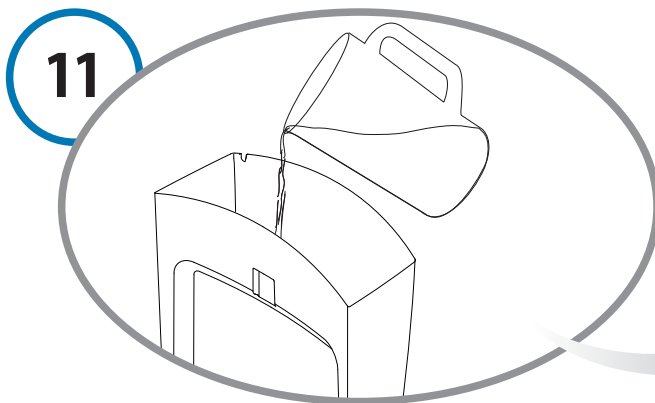
The **long coffee** button is on, while the **descaling** blinks alternately (**YELLOW** and **RED**). Press the **long coffee** button to start the descaling cycle.



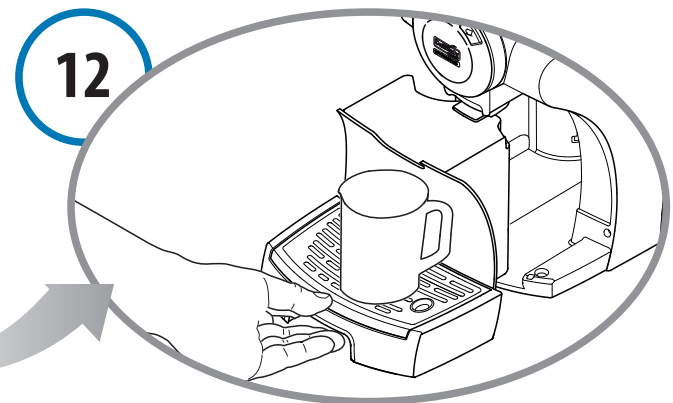
The appliance dispenses the descaling solution at intervals (**5 doses with a 4 minute pause between each one, for a total duration of about 25 minutes**). During this step, **when the buttons must not be pressed**, the **descaling** indicator light blinks alternately (**YELLOW** and **RED**).



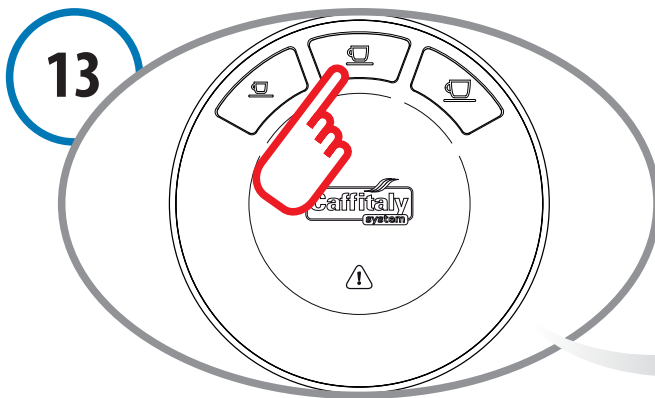
When the first step is complete, the **long coffee** button lights up and a beep is emitted and repeated. The water tank is empty.



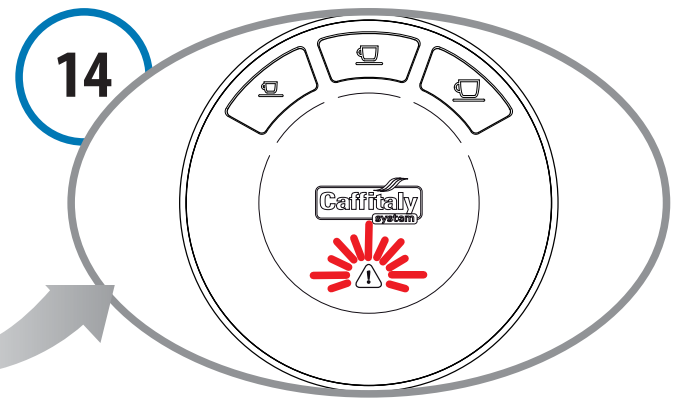
Carefully rinse out the water tank and fill it with fresh drinking water.



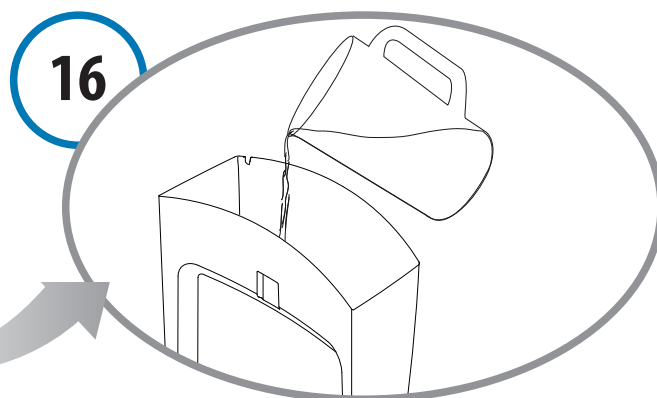
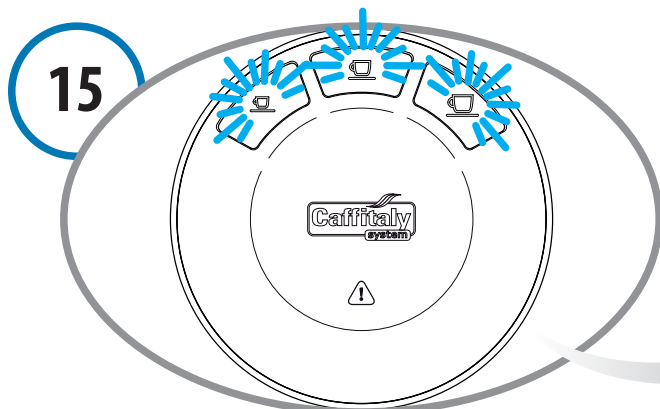
Empty and rinse out the used capsule drawer, the drip tray and the 1 litre container used previously and reposition them correctly.



Press the **long coffee** button to start the rinse cycle.

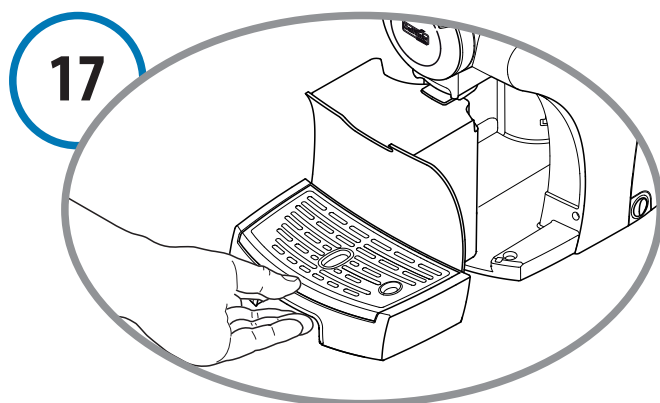


Rinse water (about 500 ml) will be run through the appliance. During this step the **descaling** blinks alternately (**YELLOW** twice and **RED** twice).



When the rinse cycle is complete, the machine emits a beep and the buttons (**espresso, long coffee, filter coffee**) blink at the same time; the machine is warming up. When the buttons turn on and remain steadily lit, the appliance is ready for use.

Carefully rinse out the water tank and fill it with fresh drinking water.





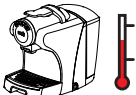






Empty and rinse out the used capsule drawer and drip tray.



Use a soft cloth and a neutral detergent to clean the surfaces of the appliance.

PROBLEM	CAUSE	SOLUTION
No coffee is brewed. The no water indicator light blinks RED .	The water tank is empty.	Fill the tank with fresh water. Press a button to reload the circuit. When the buttons remain steadily lit, the appliance is ready for use.
The coffee is not hot enough.	Cold cups / mugs. Scale build-up in machine.	Preheat the cup. Descale the machine.
The lever cannot be lowered.	The used capsule drawer is full. Capsule stuck inside the machine.	Empty out the used capsule drawer. Remove the jammed capsule.
The multifunction indicator light is on and steadily lit in RED .	Temperature sensor is malfunctioning. Heating problems.	Take the machine to an Authorised Service Centre.
When a coffee dispensing button is pressed, the machine seems to start running, but stops without dispensing coffee or after dispensing only a small amount.	Incorrect quantity programming.	Reprogram the quantity corresponding to that button. See ch. 7.
A very small amount of coffee is dispensed very slowly.	The Filter coffee button has been used with an espresso capsule.	Use the Espresso and Long coffee buttons.

	see the data plate on the bottom of the machine
P	max. 15 bar
	< 70 dB A
	approx. 6 kg
	2 litres
	ambient temperature: 10°C - 40°C
	 220 mm  320 mm  340 mm

The materials and objects in contact with food products comply with the requirements of European Regulation 1935/2004.

Imported by Roasting Australia Pty Limited
11 Hoyle Avenue, Castle Hill, NSW 2154
Phone: AUS 02 9846 0307
NZ: 0800 450 894
email: caffitalysystem@rfg.com.au
caffitalysystem.com.au

