

S21 CAFFITALY QUICK START GUIDE:

FIRST TIME USE

Diagram 1



- Single Espresso Button**
30ml (White)
- Double Espresso Button**
60ml (White)
- Indicator Light**
(Orange=Descale | Red=Check System)
- Tea Button - 120ml (Blue)**
(Tea & Hot Water ONLY)

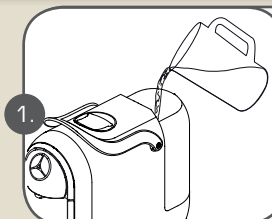


ONLY USE WITH
Caffitaly System
Capsules

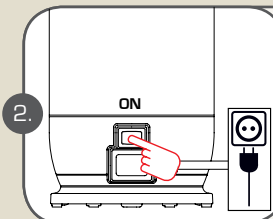
For more information, tips and video tutorials please visit our website:
www.caffitalysystem.com.au

TIP: The quantities of beverage dispensed can be programmed. Please refer to chapter "Programming the quantity of coffee in a cup" in your Manual.

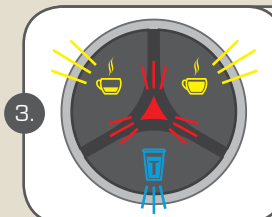
Caffitaly
system



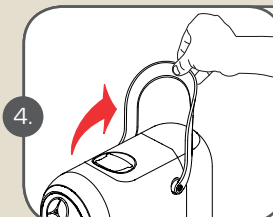
Fill the **Water Tank** with fresh, still water (either by filling through the Water Tank cover or removing the Tank).



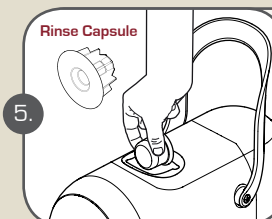
Plug in appliance. Switch the machine **ON** using the **On/Off Switch**.



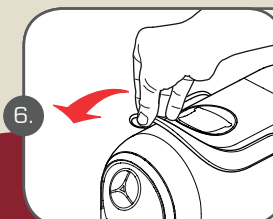
Along with the button lights, the **Indicator Light** will also alternately blink **RED**.



Raise the **Lever** to open the **Capsule Compartment**.



Insert the **Rinse Capsule** into the **Capsule Compartment**.



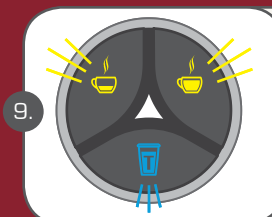
Close the **Lever** fully.



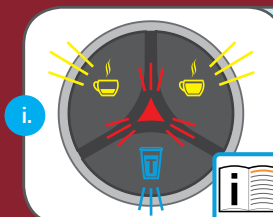
Place a large empty container (at least 250 ml) under the **Coffee Dispensing Spout**.



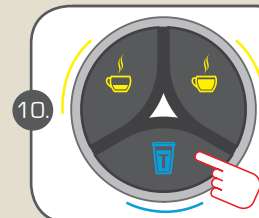
Press the **Double Espresso** button. Water will be cycled through the system. (This will take about 30 sec.) When done the **Red Indicator Light** will switch off.



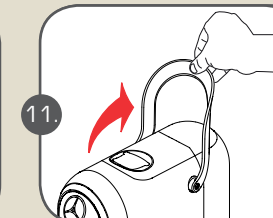
After **Step 8** has successfully been completed, all the button lights will continue to blink, the machine is warming up. (This will take about 1 min.)



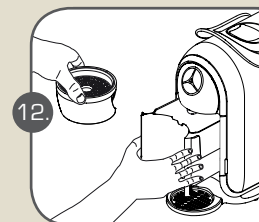
NOTE: If the **Red Indicator Light** continues to blink and no water has been extracted, repeat **Step 8**.



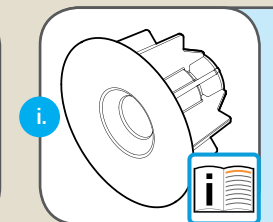
When all the button lights remain steadily lit, rinse by pressing the **Tea button**. Press again to repeat rinse cycle.



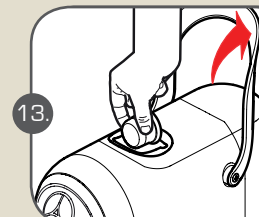
Raise the **Lever** to open the **Capsule Compartment** and eject the **Rinse Capsule**.



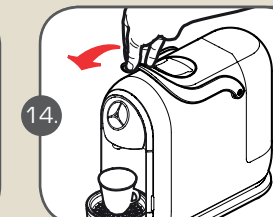
Pull drawer forward and empty any water and the **Rinse Capsule** from the **Used Capsule Drawer**. Retain the **Rinse Capsule** for future use.



The **Rinse Capsule** can be used several times when conducting rinses (cycling water through the system) or for Descaling.



Raise the **Lever** to open the **Capsule Compartment** and insert the capsule, pressing it gently into place.



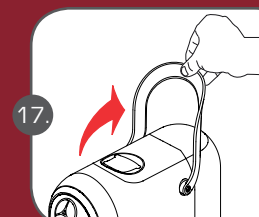
Close the **Lever** fully and place a cup or mug under the **Coffee Dispensing Spout**.



Press and release the button corresponding to the type of beverage you want as per **Diagram 1** above.



The selected beverage button will blink and machine will stop dispensing on reaching the programmed quantity.



Raise the **Lever** to eject the used capsule into the **Used Capsule Drawer**. Close the **Lever** again fully.



Cycle water through the system by pressing the **Double Espresso** button after dispensing a coffee or other hot beverage.



Rinse Capsule



PLEASE NOTE: The **Rinse Capsule** is to be used when you:

- Dispense Hot Water Only
- Cycle/Rinse water through the machine
- Descaling

If the **Rinse Capsule** is not in place when performing any of the above functions, water will pass into the **Used Capsule Drawer**. This could cause the water to build up and overflow. Check the **Used Capsule Drawer** regularly and ensure you use the **Rinse Capsule** when a coffee capsule or other hot beverage capsule is not being used.



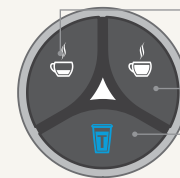
MILK FROTHER & CAPSULE MACHINE BUTTONS



Indicates Frothing



Indicates Heating



Single Espresso Button - 30ml (White)

Double Espresso Button - 60ml (White)

Tea Button (Tea & Hot Water Only) - 120ml (Blue)



ESPRESSO



- > Select your favourite Caffitaly compatible capsule.
- > Press the **Single Espresso Button** to extract a 30ml shot of coffee into your cup.



LONG BLACK



- > Select your favourite Caffitaly compatible capsule. Press the **Single Espresso Button** to extract a 30ml shot of coffee into your cup.
- > **Discard capsule** into capsule draw by raising handle, lower handle and top up your cup with hot water (**Tea Button**).



FLAT WHITE



- > Select your favourite Caffitaly compatible capsule. Press the **Single Espresso Button** to extract a 30ml shot of coffee into your cup.
- > Add 200ml of milk to your Caffitaly Milk Frother to heat the milk. Once finished, add to your coffee & enjoy.



LATTE



- > Select your favourite Caffitaly compatible capsule. Press the **Single Espresso Button** to extract a 30ml shot of coffee into your cup.
- > Add 150ml of milk to your Caffitaly Milk Frother to heat the milk. Once finished, add to your coffee & enjoy.



CAPPUCCINO



- > Select your favourite Caffitaly compatible capsule. Press the **Single Espresso Button** to extract a 30ml shot of coffee into your cup.
- > Add 100ml of milk to your Caffitaly Milk Frother to froth the milk. Once finished, add to your coffee & enjoy.



MOCHA



- > Select your favourite Caffitaly compatible capsule. Press the **Single Espresso Button** to extract a 30ml shot of coffee into your cup. Insert a Gloria Jean's Coffees™ Classic Hot Chocolate Drink capsule. Press the **Double Espresso Button** to extract a 60ml shot into your cup.
- > Add 100ml of milk to your Caffitaly Milk Frother to froth the milk. Once finished, add to your mocha blend & enjoy.



CARAMELATTE



- > Use a Gloria Jean's Coffees™ Caramel Indulgence coffee capsule. Press the **Double Espresso Button** to extract a 60ml shot of caramel infused coffee into your cup.
- > Add 150ml milk to your Caffitaly Milk Frother to froth the milk. Once finished, add to your caramel infused coffee & enjoy.



MOCHA CARAMELATTE



- > Use a Gloria Jean's Coffees™ Classic Hot Chocolate drink capsule. Press the **Single Espresso Button** to extract a 30ml shot of hot chocolate into your cup.
- > Insert a Gloria Jean's Coffees™ Caramel Indulgence coffee capsule. Press the **Single Espresso Button** to extract a 30ml shot of coffee into your cup. Add 150ml milk to your Caffitaly Milk Frother to heat the milk. Once finished, add to your choc/caramel infused coffee stir & enjoy.



CLASSIC HOT CHOCOLATE



- > Use a Gloria Jean's Coffees™ Classic Hot Chocolate drink capsule. Press the **Double Espresso Button** to extract a 60ml shot of chocolate into your cup.
- > Add 100ml of milk to your Caffitaly Milk Frother to froth the milk. Once finished, add to your chocolate drink & enjoy.



ICED COFFEE



- > Select your favourite Caffitaly compatible capsule. Press the **Single Espresso Button** to extract a 30ml shot of coffee into your cup.
- > Add ice to glass + coffee, cold milk & ice cream (if desired) & enjoy.



ICED MOCHA



- > Select your favourite Caffitaly compatible capsule. Press the **Single Espresso Button** to extract 30ml of coffee into your cup.
- > Insert a Gloria Jean's Coffees™ Classic Hot Chocolate drink capsule. Press the **Double Espresso Button** to extract a 60ml shot of chocolate into your cup.
- > Add ice to glass + coffee, cold milk & ice cream (if desired) & enjoy.



ICED CHOCOLATE



- > Use a Gloria Jean's Coffees™ chocolate drink capsule. Press the **Double Espresso Button** to extract a 60ml shot of chocolate into your cup.
- > Add ice to glass + coffee, cold milk & ice cream (if desired) & enjoy.

Suggestions are based on 180ml - 200ml cup sizes, for larger cups/ mugs or for increased strength & flavour, adjust both capsule quantity & milk quantity to desired amount, within capability of both capsule and milk systems. All drinks may also require sweetener as desired.