

MODEL **S23**

**Caffitaly**  
system



ONLY USE WITH  
**Caffitaly System  
Capsules**

## INSTRUCTION MANUAL

Imported by Roasting Australia Holdings Pty Limited

11 Hoyle Avenue, Castle Hill, NSW 2154

Phone: AU 02 9846 0307

NZ 0800 450 894

Email: [caffitalysystem@rfg.com.au](mailto:caffitalysystem@rfg.com.au)

[caffitalysystem.com.au](http://caffitalysystem.com.au)



# INDEX

## Introduction:

- Welcome 3
- **Safety Warnings 4**
- **Symbols Guide 5**

## Instructions:

- Machine Components/Dispensing Head 6
- Milk Jug Components/Milk Jug Dial Settings 7
- Correct Use of Buttons/Indicator Lights 8
- First Time Use 9
- Dispensing Coffee Only 11
- Dispensing Tea or Hot Water 12
- Dispensing Milk Based Drinks 13
- Programming the quantity of Beverage in a cup 16

- **General Operating Indications 17**

## Cleaning and Maintenance:

- Daily Maintenance/House Keeping 19
- Cleaning - Rinse Cycle 20
- Cleaning - Milk System Rinse Cycle 21

## Detaching the Components:

- Detaching the Dispensing Head 22
- Detaching the Milk Jug 23
- Detaching the Used Capsule Drawer & Drip Tray 24
- Detaching the Water Tank 24
- Descaling & Rinse Cycle 25

## Miscellaneous:

- Restore Factory Settings 28
- Energy Saving 29
- Troubleshooting 30
- Technical Data 32
- Caffitaly System Care Contact 32
- Warranty Details 33



## CONGRATULATIONS

on the purchase of your new **Caffitaly System S23 Capsule Machine**.

In no time at all you will be producing barista quality coffee including Lattes, Cappuccinos, Hot Chocolate with the press of a button, all in the convenience of your home or office.

In fact, the choice is endless especially when teamed up with one of the many Caffitaly System capsules from your favourite brands.

**Your Taste...Your Choice**



**JOIN** the **Caffitaly Club** to receive **Member Only Specials** such as Giveaways, Competitions and opportunities to try new products before they are released.

Join now and receive your **FREE GIFT**.

### **IMPORTANT NEWS - Register your Machine**

When you sign up to join the Caffitaly Club, don't forget to register your machine for warranty purposes at: [caffitalysystem.com.au](http://caffitalysystem.com.au)

Brought to you by Roasting Australia, proudly part of

**RETAILFOODGROUP**  
STRENGTH IN BRANDS

# SAFETY WARNINGS

If you do not comply with the operating instructions and safety warnings in this Instruction Manual, the machine may become dangerous to operate. Please ensure you keep this Instruction Manual in a safe place. Carefully read the following instructions before use. This way you will avoid the risk of personal injury and damage to the appliance.



- This appliance is intended to be used in domestic environments. Not suitable for Professional use.



- **ONLY use Caffitaly System compatible capsules.**  
Damage caused by using incorrect capsules will void the warranty.



- **Use the TEA button (Blue) for Tea and Hot Water ONLY!**  
Incorrect use of this button will cause damage to the machine and void the warranty.



- Use of the appliance in any manner other than as directed within this manual could cause harm to the operator and void the warranty. The manufacturer will not be responsible for injury or damage resulting from improper use of the appliance.



- After removing the packaging, check that the appliance is not damaged. If damage is detected, or upon the first sign of a defect (unusual noise or odours), or if any other problem is detected inside the appliance, do not use it and contact the **Caffitaly System Customer Service Line on AU 02 9846 0307 | NZ 0800 450 894.**



- The packaging elements (plastic bags, etc.) must not be left within reach of children as they are potential sources of danger.



- Only use the appliance if the power cord is intact. If the cord is damaged it must be replaced by the manufacturer or importer due to potential electrical safety risks. **Contact the Caffitaly System Customer Service Line on AU 02 9846 0307 | NZ 0800 450 894.**



- Use and store the appliance indoors. Make sure the electrical elements, plug and cord are dry. Never submerge the appliance in water. Protect the appliance from sprays and drips. Water and electricity together constitute a risk of electrocution.



- Do not leave the power cord near hot surfaces, sharp edges or other sharp objects.



- Only connect the appliance to power outlets complying with the requirements of the law. Make sure that the power supply voltage matches the rating shown on the data plate on the bottom of the appliance. This appliance includes an earthed pin and must be used with a power outlet with earthed connection.



- Do not pull on the power cord to disconnect it. Remove the plug carefully to avoid damage to the outlet.

Continued on next page... >>

## SAFETY WARNINGS - Continued



- This appliance is not intended for use by persons (including children) with reduced physical, sensory or mental capabilities, or lack of experience and knowledge, unless they have been given supervision or instruction concerning use of the appliance by a person responsible for their safety. **Children should be supervised to ensure that they do not play with the appliance**



- Never place your hands inside the capsule compartment. There is a risk of injury.



- **Do not open the lever while the appliance is operating. If the lever is raised during the delivery of a product, the machine can emit jets of hot water. Risk of Burns!**



- Do not remove parts of the appliance, OR insert objects into the openings. This could cause electric shocks! Any operation that is not described in this Instruction Manual should only be performed by an Authorised Support Centre. Please contact the **Caffitaly System Customer Service Line on AU 02 9846 0307 | NZ 0800 450 894.**



- Install the appliance on a solid, stable, heat resistant surface with an incline no greater than 2 degrees.



- When the **Indicator Light** blinks ORANGE and the machine beeps, it is advisable to perform the **Descaling Cycle**, as illustrated on **Page 25**. If you do not, the appliance may be damaged.



- Clean the appliance carefully and regularly with a soft cloth and a mild detergent, do not use alkaline cleaning agents. If it is not cleaned, the build-up that forms may be hazardous to your health. Unplug the appliance and allow it to cool before cleaning.



- Unplug the machine if you do not expect to use the appliance for a long period of time (leaving on vacation, etc.)

## SYMBOLS GUIDE



**CAUTION:** This is the safety warning symbol. It is used to call your attention to possible risks of personal injury. Abide by the safety messages provided in order to avoid possible injury or death.



This is the symbol used to highlight some actions that will optimise the use of this appliance.



Not  
Dishwasher  
Safe



Maintenance  
Tips

# MACHINE COMPONENTS

**Diagram 1:**  
**Machine Components**

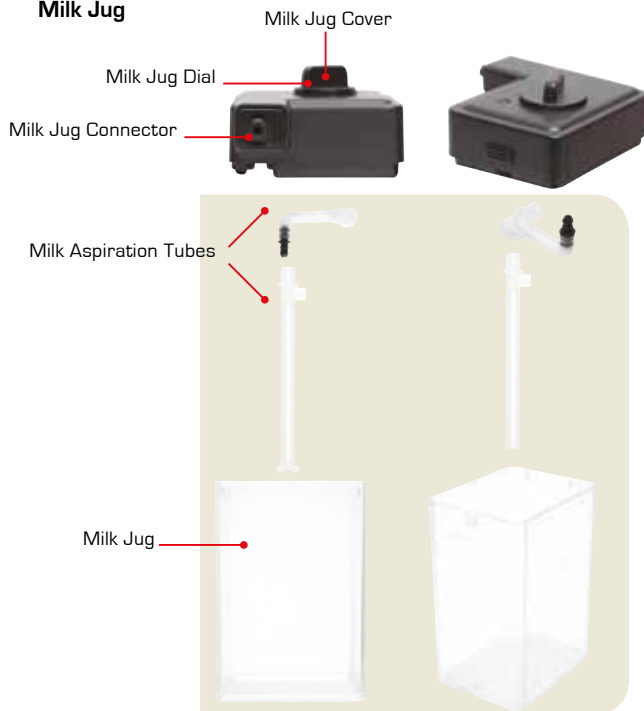


**Diagram 2:**  
**Coffee Dispensing Head**



## MILK JUG COMPONENTS

**Diagram 3:**  
**Milk Jug**



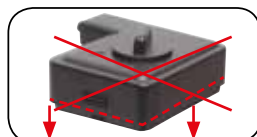
### ! MILK JUG CONNECTOR

Always ensure the **Milk Jug** is placed back into position **gently but firmly** onto your machine. There should be **NO GAP** between the **Milk Jug Connector** and the Machine.



### ! MILK JUG COVER

The **Milk Jug Cover** does not come apart. Only the **Dial** can be removed.



## MILK JUG DIAL SETTINGS

**Diagram 4: Dial Settings**

You can choose the density of the milk froth being dispensed by turning the **Milk Jug Dial** to the left for less frothed milk and to the right for more frothed milk. **DO NOT TURN THE DIAL TO THE ARROW SYMBOL ON THE LEFT AS THIS WILL REMOVE THE DIAL.**



**Figure 1.**  
Minimum amount of frothed milk. Dial is to the left.



**Figure 2.**  
Medium amount of frothed milk. Dial is to the middle.



**Figure 3.**  
Maximum amount of frothed milk. Dial is to the right.

# CORRECT USE OF BUTTONS

Please ensure you only use the Caffitaly System Capsules which can be identified by the Caffitaly Logo.

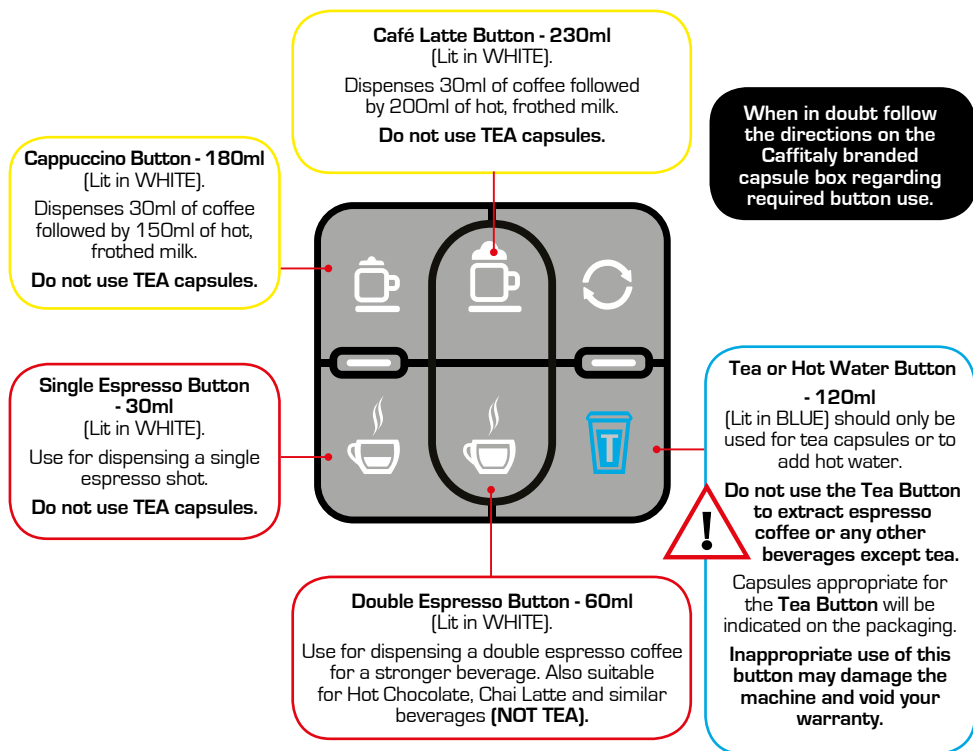
Caffitaly System Capsules can be purchased from Woolworths, Countdown (NZ) and online.

Check your favourite brand to see if they are Caffitaly System Capsules

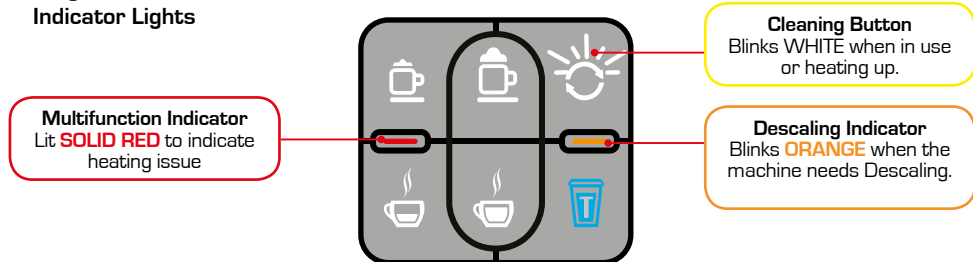


ONLY USE WITH  
Caffitaly System  
Capsules

**Diagram 5:**  
Recommended Water & Milk Volumes



**Diagram 6:**  
Indicator Lights





## FIRST TIME USE




**IMPORTANT INFORMATION** Please read these instructions in full before you switch the machine on. Failure to do so could void your Warranty. Ensure the Milk Jug is in position on the machine before switching the machine ON using the ON/OFF button for First Time Use and if the machine hasn't been used for an extended period of time.




Ensure you only use Caffitaly System Capsules which can be identified by the Caffitaly logo.






ONLY USE WITH  
**Caffitaly System  
Capsules**

1.  Open the **Water Tank Cover** & fill the tank with fresh water to the **Max.** line indicated. **DO NOT** overfill the Water Tank.

2.  Remove the Milk Jug Cover from the **Milk Jug** by pressing the button on the front. **Note:** To replace the cover, the opposite side of button (latch) should be inserted first.


3.  Fill the **Milk Jug** with fresh water to the Max. line indicated. Replace the **Milk Jug Cover** onto the **Milk Jug** & return into position on your machine.

  Always ensure the **Milk Jug** is placed back into position **gently** but **firmly** onto your machine. There should be **NO GAP** between the **Milk Jug Connector** & the Machine.

4.  Plug in your machine & switch it **ON** by pressing the **On/Off** button. All the button lights & **Red Multifunction Indicator** light will blink simultaneously until **Primed**.

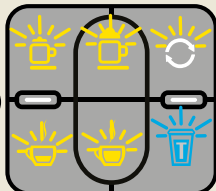
5.  Raise the **Lever** & check there are no capsules in the **Capsule Compartment**.



6.  Place a large empty container (at least 500ml) under the **Dispensing Spout**. **Note:** You can remove the Drip Tray if required.


7.  Press the **Tea button**. Water will cycle through the system (approx. 60 sec.) When done, the **Multifunction Indicator** will switch off.


Continued on next page... >>

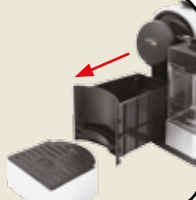
## FIRST TIME USE - continued

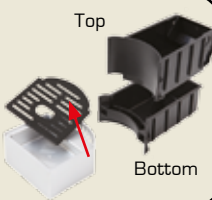
8.  After **Step 7** has successfully been completed, all the button lights will continue to blink, as the machine warms up. (This will take about 30 sec.)

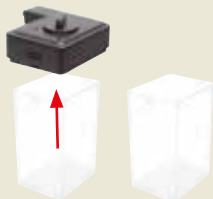
  If the **Multifunction Indicator** continues to blink & no water has been extracted, repeat **Step 7**.


9.  When all the button lights remain steadily lit, rinse by pressing the **Tea button**. Press again to repeat **Rinse Cycle**. Once finished, the machine will beep.

10.  Press the **Cleaning button** to cycle water through the **Milk System**. There will be a slight pause then the **Milk System Rinse Cycle** will commence & automatically stop upon completion.

11.  Once the **Rinse Cycle** has completed. Remove the **Drip Tray & Used Capsule Drawer** from your machine. Separate the **Grid** from the **Drip Tray**.

12.  Empty any residual water, then reassemble the components. Return the **Drip Tray, Grid & Used Capsule Drawer** to your machine.

13.  Remove the **Milk Jug**, empty, rinse with fresh water & return to your machine. Fill the **Milk Jug** with fresh milk and return back into position.

14.  Open the **Water Tank Cover** & top up the tank with fresh water to the **Max.** line indicated. Your machine is now ready for use with milk based drinks.

## DISPENSING COFFEE ONLY


**NOTE:** For dispensing beverages without milk, you can use the **Single** or **Double Espresso** button without the **Milk Jug** in position. The **Milk buttons** will not be lit however the remaining beverage buttons will be lit and able to dispense beverages.

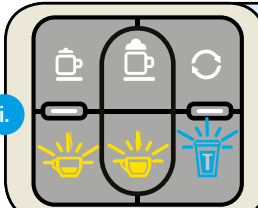


Ensure you only use Caffitaly System Capsules which can be identified by the Caffitaly logo.



ONLY USE WITH  
Caffitaly System  
Capsules


1.  Plug in your machine & switch it **ON** by pressing the **On/Off** button. All the button lights will flash simultaneously for approx. 60 sec. until warmed up.

i.  **NOTE:** If the **Milk Jug** is not in position, only the bottom lights will flash. When the machine has warmed up, the bottom lights only will be steadily lit.

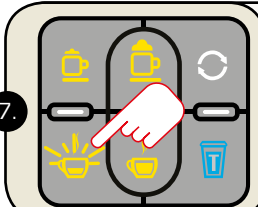
2.  When all the button lights remain steadily lit, your machine is ready for use.

3.  Raise the **Lever** to open the **Capsule Compartment**. Insert the capsule, pressing gently into place.

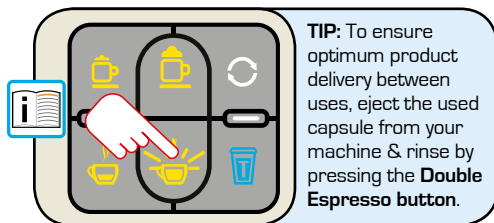
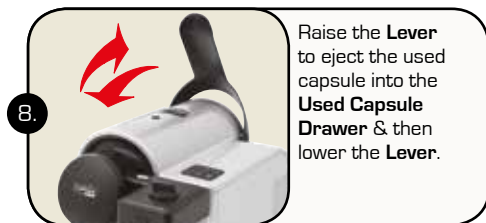
4.  Close the **Lever** fully & place a cup under the **Dispensing Spout**.

5.  Press & release the **Single or Double Espresso** button depending on the desired coffee. The selected button will flash.

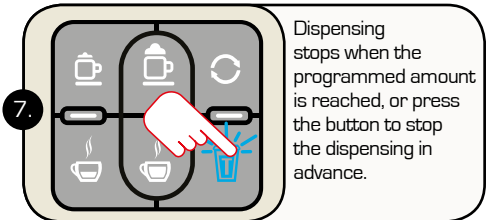
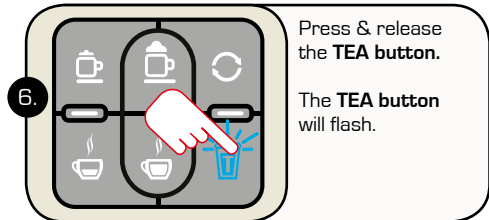
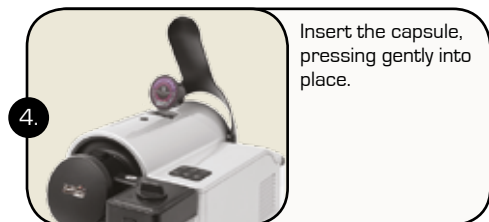
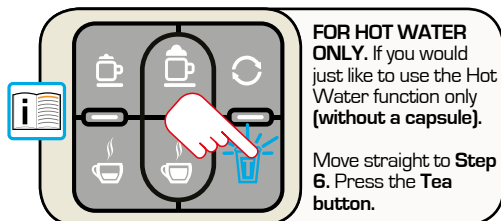
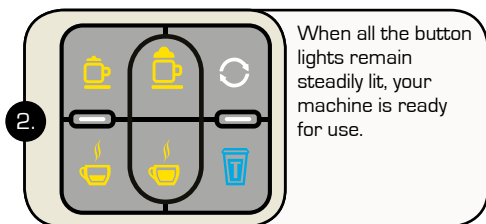
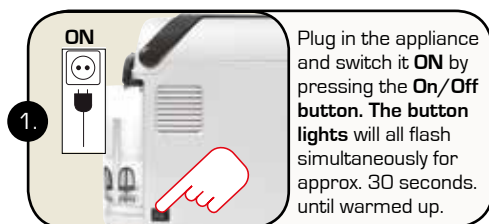
6.  **WARNING!** Do not use the **Tea** button (lit in blue) for dispensing coffee. Doing so will damage the machine and void your warranty.

7.  Dispensing stops when the programmed amount is reached, or press the button to stop dispensing in advance.

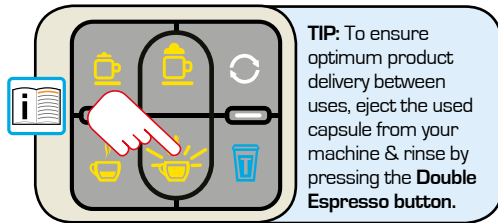
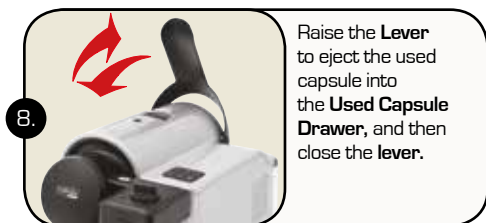
## DISPENSING COFFEE ONLY - continued



## DISPENSING TEA OR HOT WATER

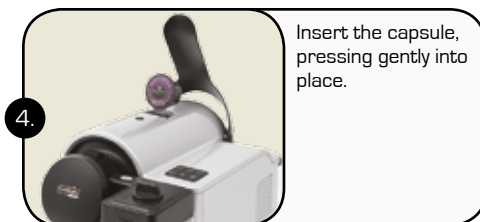
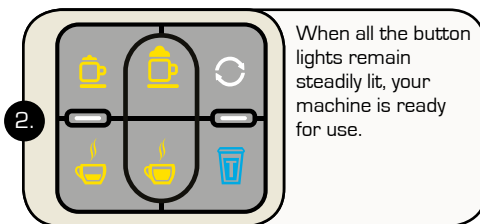
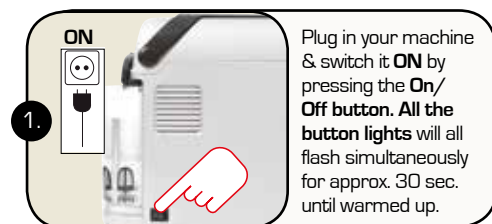


## DISPENSING TEA OR HOT WATER




**NOTE:** The quantity of beverage dispensed can be programmed according to personal taste and the size of the cups or mugs used. Please refer to 'Programming the Quantity of Beverage in a Cup' on **Page 15**.

## DISPENSING MILK BASED DRINKS




## DISPENSING MILK BASED DRINKS - continued

**7.**  Milk

Add fresh cold milk to the **Milk Jug**.

**Note:** Maximum is 500ml.

**8.** 

Replace the **Milk Jug** into position by pushing gently onto your machine ensuring the **Milk Jug** is flush on the right grid platform.

Always ensure the **Milk Jug** is placed back into position **gently but firmly** onto your machine. There should be **NO GAP** between the **Milk Jug Connector** and the Machine.

You can select the density of froth you would like in your beverage by turning the **Milk Jug Dial**. This will regulate the amount and density of froth that is dispensed.

- If you prefer a smaller amount of froth for example, a Flat White, turn the **Milk Jug Dial** to the left.
- If you like Lattes, you may prefer to have a more frothier style of milk, turn the **Milk Jug Dial** to the middle.
- To produce a more denser froth for Cappuccinos etc. turn the **Milk Jug Dial** to the right.

**DO NOT TURN THE DIAL TO THE ARROW SYMBOL ON THE LEFT AS THIS WILL REMOVE THE DIAL.**



**Figure 1.**  
Minimum amount of frothed milk. Dial is to the left.



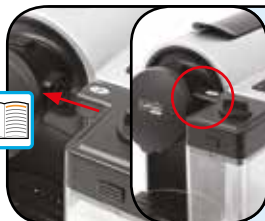
**Figure 2.**  
Medium amount of frothed milk. Dial is to the middle.



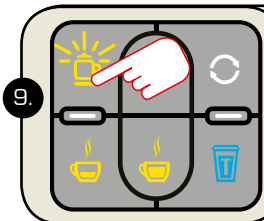
**Figure 3.**  
Maximum amount of frothed milk. Dial is to the right.



## DISPENSING MILK BASED DRINKS - continued



Always ensure the **Milk Jug** is placed back into position **gently but firmly** onto your machine. There should be **NO GAP** between the **Milk Jug Connector** and the Machine.

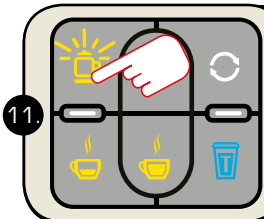


Press and release the **Cappuccino**, or **Café Latte** button depending on the desired beverage. The selected button will flash.

10.

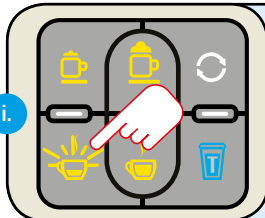


Your machine will start dispensing depending on the button selected.



Dispensing stops when the selected programmed amount is reached. You can also press the button again to stop the dispensing in advance, e.g. if you like a Piccolo or Macchiato.

i.



You can choose to top up with another shot of espresso by inserting another capsule & pressing the **Single Espresso** button.



12.

When you have finished making your milk beverage, raise the **Lever** to eject the used capsule into the **Used Capsule Drawer** & close the **Lever**.



1. To add more hot water to your beverage, check there is no capsule in the **Capsule Compartment**, press and release the **Tea** button until you have the amount you desire, then press the **Tea** button again to stop the hot water dispensing.

2. To ensure optimum product delivery between uses, eject the used capsule from your machine & rinse by pressing the **Double Espresso** button.

3. If you run out of milk in the **Milk Jug** while dispensing a milk based beverage, press the selected button to stop frothing. Eject the capsule & replace with a new capsule. Add milk to the Milk Jug and start the process again with an empty cup or mug.

**PLEASE NOTE:** To maintain the freshness of the milk, the **Milk Jug** should be removed and stored in the refrigerator between uses. Please ensure a '**Milk Jug System Cycle**' on **Page 21** is completed before removing & storing in the refrigerator. We recommend only storing the refrigerated milk in the Milk Jug for a maximum of 2 days.

## PROGRAMMING THE QUANTITY OF BEVERAGE IN A CUP



**NOTE:** The quantity of coffee dispensed may be programmed, from a minimum of 30ml to a maximum of 250ml.



**NOTE:** Recommended Programming/Factory Programming:

- 30ml: Single Espresso Shot
- 60ml: Double Espresso Shot
- 120ml: Tea & Hot Water Button

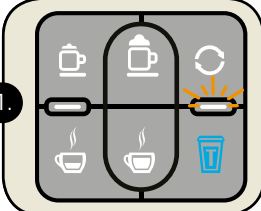
Note: Quantities are approximate and may vary slightly between capsules.

	<p>1. Raise the <b>Lever</b> to open the <b>Capsule Compartment</b>.</p>		<p>2. Insert the capsule, pressing gently into place.</p>
	<p>3. Close the <b>Lever</b> &amp; place a cup or mug under the <b>Dispensing Spout</b>.</p>		<p>4. <b>Press and hold</b> the desired beverage button. Machine will beep once indicating the reprogramming has started.</p>
	<p>5. On reaching the desired amount of beverage, release the button. Machine will beep indicating that it is now reprogrammed.</p>		<p>6. Raise the <b>Lever</b> to eject the capsule into the <b>Used Capsule Drawer</b>.</p>
	<p>7. Close the <b>Lever</b>. You are now ready for your next beverage.</p>		<p><b>PLEASE NOTE:</b> The <b>Cappuccino</b> and <b>Café Latte</b> buttons are unable to be reprogrammed from the Factory Settings.</p>

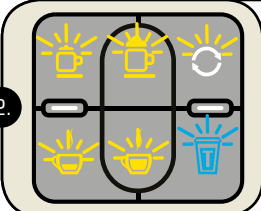


# GENERAL OPERATING INDICATIONS

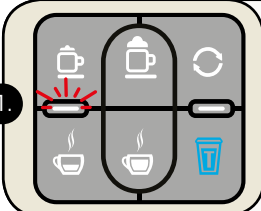
## DESCALING SIGNAL:


1.  When the **Descaling Indicator Light** blinks **ORANGE** it is advisable to perform the **Descaling Cycle** on **Page 25**.

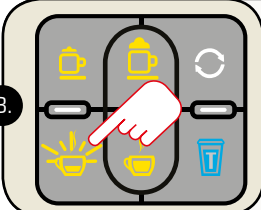
## HEATING:

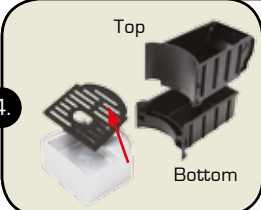
2.  When all the button lights continuously blink, the machine is warming up. [This will take approx.30 seconds.]

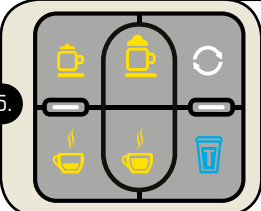
## WHEN THE WATER RUNS OUT DURING OPERATION:

1.  The **Water Tank** is empty when the **Multifunction Indicator Light** blinks **RED** & your machine beeps continuously.

2.  Fill the **Water Tank** with fresh water to the **Max. line** indicated. **DO NOT** overfill the Water Tank.

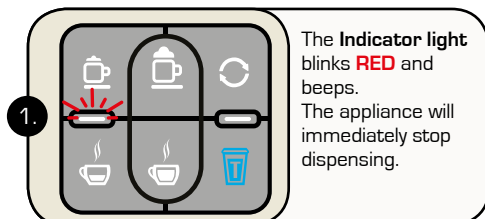
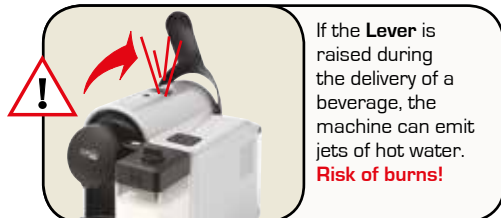
3.  Press the **Single or Double Espresso button**. Wait for the machine to complete the **Priming Cycle** as it fills with water.

4.  Empty any residual water, then reassemble the components. Return the **Drip Tray, Grid & Used Capsule Drawer** to your machine.

5.  When the button lights turn on & remain steadily lit, your machine is ready for use. **NOTE:** If the **Indicator light** continues to blink, repeat **Step 3**.

## GENERAL OPERATING INDICATIONS - continued

### IF THE LEVER IS RAISED:



## DAILY MAINTENANCE - HOUSEKEEPING

Always ensure the **Water Tank** is positioned correctly on your machine.

### Diagram 1.

Tilt the **Water Tank** slightly and align the grooves on the base of the Tank and your machine. Slide the Tank towards the back of the machine.

### Diagram 2.

Push gently but firmly until the two lugs have engaged with the indents on the back of the machine.

### Diagram 3.

The Tank should sit flush with your machine.



Diagram 1.



Diagram 2.



Diagram 3.

### Drying The Water Well

#### Diagram 1.

If the **Water Tank** is continually removed from the machine, a small pool of water may appear at the base of the tank, this is normal. Wipe the base of the tank & platform regularly to avoid water spilling onto the bench.

#### Diagram 2.

Do not overfill the **Water Tank** past the **Maximum** line.

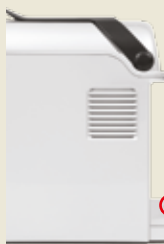


Diagram 1.



Diagram 2.

### Milk Jug Connection

#### Diagram 1.

When connecting the **Milk Jug** to your machine, align the Milk Connector to the receiver on your machine.

#### Diagram 2.

Push the **Milk Jug** firmly against the receiver on the machine until there is no visible gap between the two parts.

**WARNING:** There is a risk of scolds and burns if the **Milk Jug** and machine are not correctly fitted and the machine is in use.

Always ensure the **Milk Jug** is placed back into position **gently** but **firmly** onto your machine. There should be **NO GAP** between the **Milk Jug Connector** and the Machine.

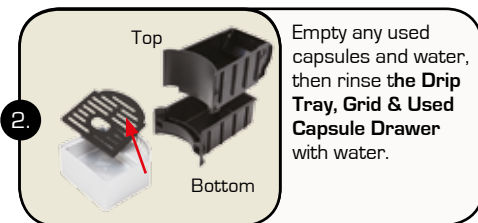
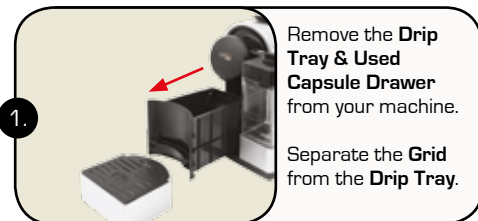


Diagram 1.



Diagram 2.

## DAILY MAINTENANCE



Use a soft damp cloth and a mild detergent to clean the surfaces of the appliance.



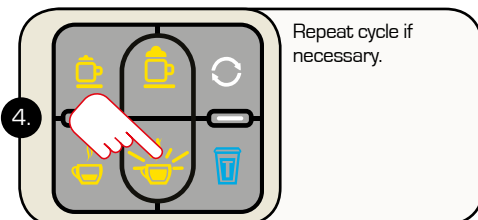
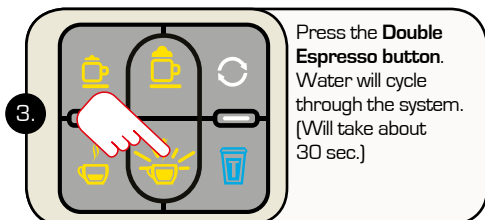
The plastic parts of the appliance are **NOT** dishwasher safe.



**DANGER:** Never submerge the appliance in water. Protect appliance from sprays and drips. **Water and electricity together constitute a risk of electrocution.**

## CLEANING – RINSE CYCLE

After dispensing any beverage it is advisable to run a **Rinse Cycle** through the machine to remove traces of coffee grounds or flavours that may taint any following beverages.



## CLEANING - MILK SYSTEM RINSE CYCLE

After dispensing any milk based drinks, you must complete a **Milk System Rinse Cycle**. If you have finished using the **Milk Jug**, ensure you perform the **Milk System Rinse Cycle** and have cleaned the **Milk Jug Dispenser** (instructions below).

**Full cleaning of the Milk Jug Dispenser must be completed at the end of each day.**

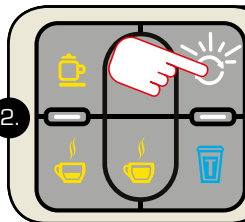


**NOTE:** If there is still milk remaining in the **Milk Jug**, you can still perform the **Milk System Rinse Cycle** function without removing the milk. The **Milk Jug** (with milk) can remain on your machine. *Your machine won't perform this function without the Milk Jug in position.*

Ensure you refrigerate the **Milk Jug** once this cycle has finished.



Ensure the **Water Tank** is topped up with water. Place a large empty container (at least 500ml) under the **Dispensing Spout**.



Press the **Cleaning button**. The button will continue to blink while cleaning (approx. 50 sec.). The **Milk System Rinse Cycle** will stop automatically.




If the Cleaning Button is pressed for 2 seconds or longer, the machine will automatically move into the **Descaling Cycle**. To cease this function press the cleaning button again quickly. The button lights will flash while the machine warms up.


It is recommended to perform a **complete clean** of the **Milk Jug** and **components** at least **twice a week or more**. Refer to instructions on the following page.


## CLEANING – DETACHING THE COMPONENTS


For best results, it is recommended that the **Milk Jug** is given a complete clean at the end of each day. Start by running a **Milk System Rinse Cycle** as described on the previous page. **Please perform a full Cleaning Process at least twice a week.**


### DETACHING THE DISPENSING HEAD


- 

1. Remove the **Milk Jug** from your machine **before** detaching the **Dispensing Head**. **Note:** The **Milk Jug** is removed from the side, not the front.
  - 

2. Make sure the **Lever** is closed & no capsule is in the **Capsule Compartment**.
  - 

3. Rotate the **Dispensing Head Cover** to the left (anticlockwise) to unlock and remove.
  - 

4. Simultaneously press both of the **Detach** buttons located on the top and underneath the **Dispensing Head**. Remove from your machine.
- 
- Ensure you depress both buttons on the top and bottom of head and pull the head straight out when removing. Do not tilt or twist when removing as it could damage the nozzle.
- 

5. Remove the **Coffee Outlet & Milk Outlet Tubes**.
  - 

6. Remove **Dispensing Spout** by pressing gently underneath the **Dispensing Spout** & push up and through the **Dispensing Head**.

## CLEANING – DETACHING THE COMPONENTS - Continued

To remove the **Milk Connector Out Knob**, turn the **Dispensing Head** to the back. On the left side you will see the knob in the 'Locked Position' (Image 1).

Unlock the knob by rotating it to the right (anticlockwise). When unlocked, the knob can be removed and you can wash the **Dispensing Head** (Image 2).

All of these components can be washed with warm water using a mild detergent, rinsed and reassembled. These are **NOT DISHWASHER SAFE**.



Image 1



Image 2

### DETACHING THE MILK JUG

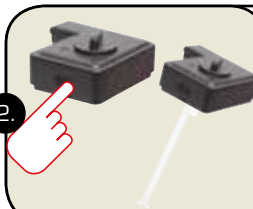
1.



Remove the **Milk Jug** from your machine.

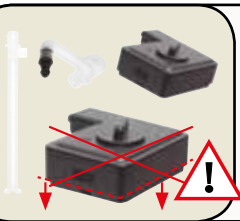
**Note:** The **Milk Jug** is removed from the side, not the front.

2.



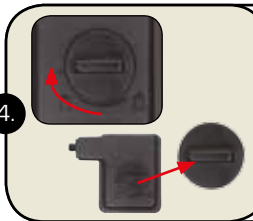
Press the **Detach button** on the front of the **Milk Jug**. Remove the **Milk Jug Cover** together with the **Milk Aspiration Tubes**.

3.



Unplug the **Milk Aspiration Tubes** & separate from the **Milk Jug Cover**. The **Milk Jug Cover** does not come apart. Only the **Dial** can be removed.

4.



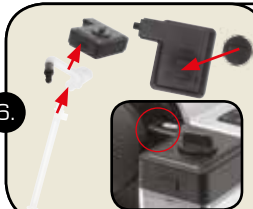
Turn the **Milk Jug Dial** to the arrow on the left side and remove the **Dial** from the **Milk Jug**. **Note:** The **Milk Jug Cover** does not come apart.

5.



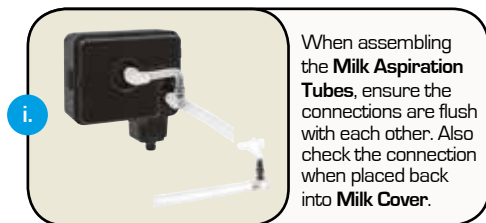
Wash **Milk Jug**, **Milk Jug Cover**, **Dial** & **Aspiration Tubes** in warm water using a mild detergent, rinse with fresh water. **All traces of milk must be removed.**

6.

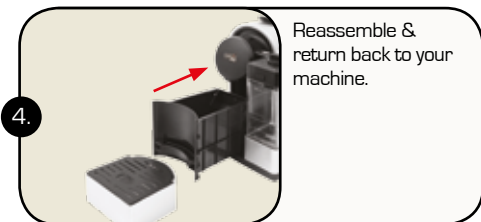
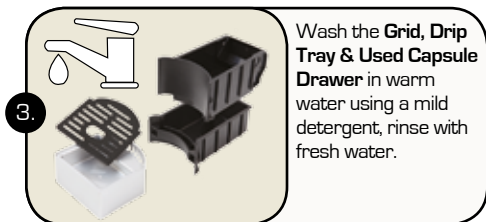
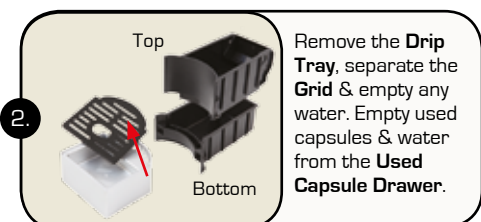
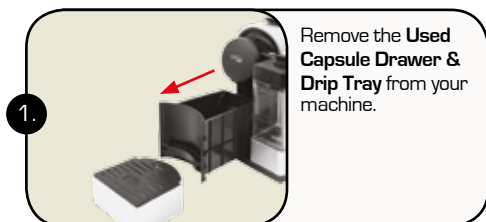


Reassemble all the components & return to your machine.

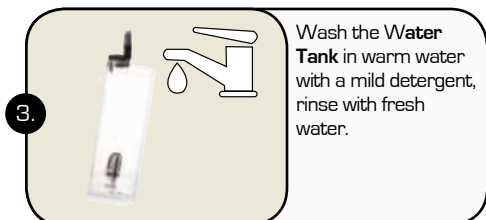
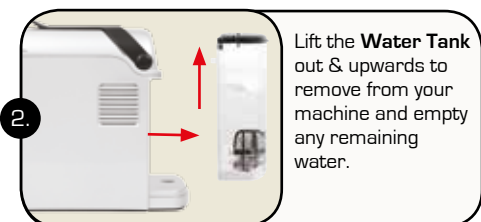
## CLEANING – DETACHING THE COMPONENTS - Continued



### DETACHING THE USED CAPSULE DRAWER AND DRIP TRAY



### DETACHING THE WATER TANK





# DESCALING INSTRUCTIONS



**Descaling Signal:** When the **Descaling Indicator Light** blinks **Orange**, it is advisable to perform the **Descaling Cycle with 48 hours or before next use**. Failure to descale your machine will be detrimental to the taste of the coffee and may cause long term damage to your machine.



**NOTE:** Descaling refers to the removal of the natural mineral build up within the pipes of the machine. If not removed this may result in a poor quality beverage and eventually block the pipes.

The machine features an advanced program that monitors how much water is used to dispense beverages



**CAREFULLY** read the directions for use on the package of the descaling agent. Avoid contact with eyes, skin and machine surfaces. Do not switch off the appliance during descaling and do not lift the lever. Someone must be present during the operation. **Don't use vinegar: it could damage your appliance.**



**Descaling will happen in Two (2) Phases**

**Phase 1.** Descales the Coffee & Milk System

**Phase 2.** Rinse Cycle

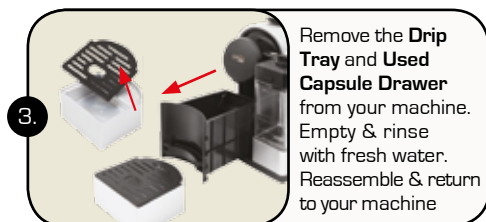
**PLEASE NOTE: DO NOT LEAVE THE MACHINE DURING THE DESCALING PROCESS**



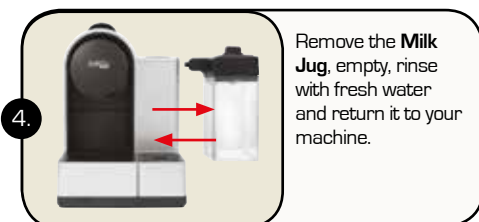
When the **Descaling Indicator Light** blinks **Orange**, you need to descale your machine.



Raise the **Lever** to open the **Capsule Compartment** & check there are no capsules remaining.



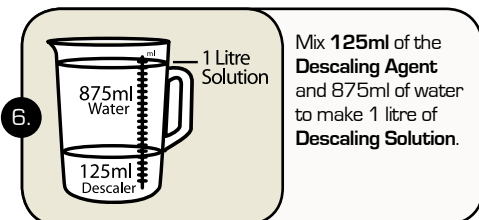
Remove the **Drip Tray** and **Used Capsule Drawer** from your machine. Empty & rinse with fresh water. Reassemble & return to your machine



Remove the **Milk Jug**, empty, rinse with fresh water and return it to your machine.



Remove, empty & rinse the **Water Tank**. Replace onto your machine.



Mix **125ml** of the **Descaling Agent** and **875ml** of water to make **1 litre** of **Descaling Solution**.

Continued on next page... >>


## DESCALING INSTRUCTIONS - continued

7.  Descaling Solution


Add the 1 litre of **Descaling Solution** to the **Water Tank**.

8. 

Place at least a **1 Litre** empty jug under the **Dispensing Spout**.

9. 

Press and hold the **Cleaning button** in for **TWO SECONDS** (2 seconds), then release. This will commence the **Descaling Cycle**.

10. 

The **Cleaning button** will blink during the **Descaling Cycle**.


 

**DO NOT PRESS ANY BUTTONS DURING THIS PROCESS UNTIL PHASE 2.**


**DO NOT LEAVE THE MACHINE UNATTENDED.**

i. 

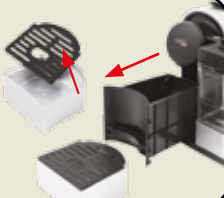
During the descaling process, you will hear the machine pumping as it cycles the descaling solution through the tubes. This process takes approx. 15 to 16 minutes.

11. 

When **Phase 1** has completed, the machine will stop the pumps. There should be approx. 600ml of descaling solution in the jug. Empty the jug & replace under the **Dispensing Spout**.

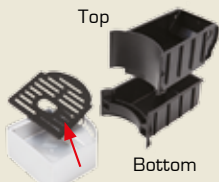
i. 

The **Cleaning Button** will remain blinking until **Phase 2 - Rinse Cycle**.

12. 

Remove the **Drip Tray** and **Used Capsule Drawer** from your machine.


Separate the **Grid** from the **Drip Tray**.


13. 


Empty any residual water, rinse with fresh clean water.

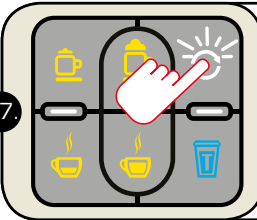
Reassemble & return the **Drip Tray, Grid and Used Capsule Drawer** to your machine.

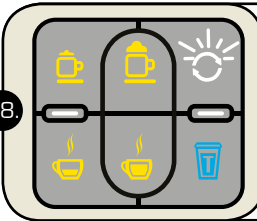
## DESCALING INSTRUCTIONS - continued


- 

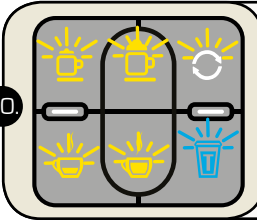
14. Remove the **Water Tank**, empty the remaining descaling solution & rinse the **Water Tank** with fresh clean water. Replace back onto your machine.
- 

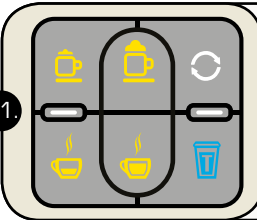
15. Open the **Water Tank Cover** and fill the tank with **fresh** water to the **Max.** line indicated.
- 

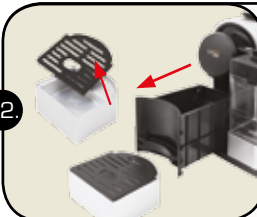
16. Ensure you have placed the empty 1 Litre jug under the **Dispensing Spout**.
- 


17. Press the **Cleaning button**.  
The **Rinse Cycle** will run for approximately 2.5 minutes. The **Rinse Cycle** will stop automatically.
- 

18. The **Cleaning button** will continue to blink until it has completed the **Rinse Cycle**.
- 

19. Upon completion, you will hear the machine beep & there will be approximately 1 Litre of water pumped through the machine into the jug.
- 


20. The lights will blink while the machine warms up.
- 

21. When finished, all the button lights will be steadily lit.
- 

22. Remove the **Milk Jug, Drip Tray and Used Capsule Drawer** from your machine. Separate the **Grid** from the **Drip Tray**.
- 

23. Empty any residual water, rinse with fresh water. Reassemble and return to your machine.

## DESCALING INSTUCTIONS - continued


24.  Water

Open the **Water Tank Cover** & top up with fresh clean water if required.


Your machine is now ready to use.

## RESTORE FACTORY SETTINGS (RESET)


These instructions allow you to reset the machine back to its factory setting – helpful if you experience an issue with the machine, or you have changed the pour levels on the coffee levels and can't change them back to their original levels.

1.  OFF


Switch **OFF** using the **On/Off** button. Ensure the **Lever** is up.

2. 

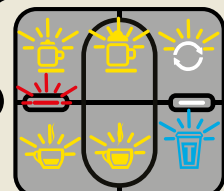
Ensure you hold the **Single Espresso** button for the **WHOLE** of **Step 3** and **Step 4**.

3.  ON


Switch **ON** using the **ON/OFF** button, then after 1 second, close and open the **Lever** within 1 second.

4. 

**5 beeps** signals that the reset has been done, **THEN** release the **Single Espresso** button.


5. 


The button lights will flash and the **RED Indicator light** will blink indicating that the machine now needs to be **Primed** as directed in '**First Time Use**' on **Page 9**.


 If your machine hasn't entered into the Prime mode, please repeat from **Step 1**. The timing of Closing and Opening the Lever is precise and may take a couple of attempts before successful.

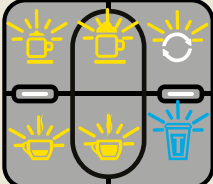
If you have reset the machine and the problem still continues, please contact the Caffitaly System Customer Care Line. Details on the front cover.


## ENERGY SAVING

1.  After 10 minutes of disuse the machine turns off automatically & the button lights will slowly and sequentially blink.



2.  To start using your machine again, press any button or lift the Lever.

3.  All the button lights will blink as the machine warms up. Approx. 20 to 30 seconds.

4.  Your machine is ready to use when all the lights are steadily lit.

# TROUBLESHOOTING

PROBLEM	CAUSE	SOLUTION
<b>FIRST USE</b> There is a burning smell when the machine first starts and a beverage button is pressed.	- Machine heating up for the first time.	- There may be a slight burning smell coming from the machine when first used. This is caused by the water heating as it travels through the pipes and will dissipate.  - <b>PLEASE NOTE:</b> Steam may appear be seen coming from the <b>Capsule Compartment</b> , this is steam from the hot water entering into the <b>Capsule Compartment</b> and will dissipate.
Water residue within the machine on opening.	- The system is quality checked prior to dispatch. There may be residual water left from testing.	- The water residue will be removed when you conduct the 'First Time Use' on <b>Page 9</b> .
<b>RED INDICATOR LIGHT</b> No beverage is brewed. The <b>Indicator light</b> blinks <b>RED</b> and beeps continuously.	- The <b>Water Tank</b> is empty	- Fill the <b>Water Tank</b> with fresh water. Press <b>Single</b> or <b>Double Espresso button</b> . When the buttons remain steadily lit, the appliance is ready for use.
The <b>Indicator Light</b> is on and steadily lit in <b>RED</b> . Water comes out cold.	- Heating problems.  - Incorrect use of the <b>Tea button</b> .	- Turn off the machine, then turn it back on after a few minutes.  - The <b>Tea button</b> is only to be used for Tea capsules and hot water.  Note: If the <b>RED Indicator Light</b> remains steadily lit after turning the machine off and on, perform a <b>Factory Reset</b> as described on <b>Page 25</b> .  If the problem persists please contact the <b>Caffitaly Customer Service Line</b> on: - <b>AU: 02 9846 0307</b> - <b>NZ: 0800 450 894</b>
The <b>RED Indicator light</b> is lit steadily and the buttons are flashing.	- Priming	Press the <b>Double or Single Espresso button</b> to commence the <b>Prime process</b> . Refer to <b>Page 9, 'First Time Use'</b> .
<b>ORANGE INDICATOR LIGHT - DESCALING.</b> The <b>Indicator Light</b> is lit <b>ORANGE</b> .	- Machine requires <b>Descaling</b> .	- Refer to ' <b>Descaling</b> ' on <b>Page 25</b> to descale the machine.
Pressed the <b>Cleaning button</b> and my machine went into <b>Descaling Mode</b> .	- <b>Cleaning button</b> held down for 2 seconds or more.	- To stop the <b>Descaling Mode</b> , press the <b>Cleaning button</b> again. The <b>Descaling Mode</b> will stop and the button lights will flash as the machine warms up.
<b>BUTTON LIGHTS</b> The machine is on and the <b>Milk button</b> lights are not lit.	- The <b>Milk Jug</b> is not in position correctly.	- Firmly place the <b>Milk Jug</b> into the <b>Milk Jug Connector</b> on the machine. Ensure there is no gap between the <b>Milk Jug Connector</b> and the machine. Refer to <b>Diagram 3, Page 7</b> .

## TROUBLESHOOTING - continued

PROBLEM	CAUSE	SOLUTION
<b>DISPENSING</b> When a coffee <b>Dispensing button</b> is pressed, the machine starts running, but stops without dispensing coffee or after dispensing only a small amount. (Under 30ml).	<ul style="list-style-type: none"> <li>- Pre-infusion</li> <li>- Incorrect beverage quantity programming.</li> </ul>	<ul style="list-style-type: none"> <li>- Pre-infusion involves a small amount of hot water running through the filters ensuring there is uniform distribution of water over the entire surface of coffee before the full beverage is dispensed.</li> <li>- Reprogram the quantity of beverage corresponding to your selected button.</li> </ul> <p>Refer to “<b>Programming the Quantity of Coffee in a Cup</b>” on <b>Page 16</b>.</p>
Coffee being dispensed very slowly and is weak or poor quality.	<ul style="list-style-type: none"> <li>- Incorrect use of the buttons (Use of <b>Tea button</b>);</li> <li>- Incorrect coffee capsule being used.</li> </ul>	<ul style="list-style-type: none"> <li>- Only use the Single or Double Espresso buttons.</li> <li>- For Milk based coffee only use the <b>Cappuccino</b> or <b>Latte buttons</b>.</li> <li>- Ensure you only use the <b>Caffitaly System Capsules</b>.</li> </ul>
Used the Cappuccino or Latte function and very little milk coming out.	<ul style="list-style-type: none"> <li>- <b>Milk Jug</b> not positioned correctly.</li> <li>- <b>Milk Jug Aspiration Tubes</b> not connected;</li> <li>- <b>Milk Connector Out Knob</b> is unlocked.</li> </ul>	<ul style="list-style-type: none"> <li>- Firmly place the <b>Milk Jug</b> into the <b>Milk Jug Connector</b> on the machine. Ensure there is no gap between the <b>Milk Jug Connector</b> and the machine. <b>Diagram 3, Page 7</b>.</li> <li>- Ensure the <b>Milk Aspiration Tubes</b> are connected correctly. Refer to <b>Page 24</b>.</li> <li>- Undo the <b>Coffee Dispensing Head</b>, turn it to the back and check the <b>Milk Connector Out Knob</b> is in place and in the <b>Locked Position</b> as described on <b>Page 23</b>.</li> </ul>
Coffee grinds appearing in the cup or mug	<ul style="list-style-type: none"> <li>- Incorrect coffee capsule being used.</li> <li>- Not cycling water through the machine after use.</li> </ul>	<ul style="list-style-type: none"> <li>- <b>Ensure you are using Caffitaly System compatible capsules only</b>. There will be a <b>Caffitaly System logo</b> on the packaging.</li> <li>- Cycle water through the machine after each use by pressing the <b>Double Espresso button</b>. This also assists in stopping the coffee grinds building up and blocking the system.</li> </ul>
<b>OTHER</b> The <b>Lever</b> cannot be lowered.	<ul style="list-style-type: none"> <li>- The <b>Used Capsule Drawer</b> is full;</li> <li>- Capsule is stuck in the <b>Capsule Compartment</b>.</li> </ul>	<ul style="list-style-type: none"> <li>- Empty the <b>Used Capsule Drawer</b>.</li> <li>- Gently push down on the jammed capsule with a new capsule.</li> </ul>
Water is leaking from the <b>Used Capsule Drawer</b> .	<ul style="list-style-type: none"> <li>- Beverage has been dispensed without using a capsule (excluding <b>Tea/Hot Water button</b>);</li> <li>- Not emptying the <b>Used Capsule Drawer</b> after using the Cleaning/Rinse Cycles;</li> <li>- <b>Used Capsule Drawer</b> is full of capsules.</li> </ul>	<ul style="list-style-type: none"> <li>- Regularly check the <b>Used Capsule Drawer</b> for residual water and empty if required.</li> <li>- Check and empty the <b>Used Capsule Drawer</b> after each Cleaning/Rinse Cycle.</li> <li>- Empty the <b>Used Capsule Drawer</b>.</li> </ul>

## TECHNICAL DATA



Refer to data plate on the base of the machine.



Max. 15 bar



< 70dB A



Approx. 6kg



Water maximum: 1 litre. Milk maximum: 500ml



Ambient temperature: 10°C - 40°C



8 Capsules



190 mm



270 mm



375 mm



The appliance has been manufactured using high quality materials that can be reused or recycled. Dispose of the appliance in a suitable waste collection centre.

All materials and objects in contact with food products comply with the requirements of European Regulation 1935/2004.



Please dispose of the packaging and capsules thoughtfully. Cardboard and capsules are recyclable. Before recycling your capsules, ensure you contact your local Waste Collection Centre for capsule recycling information.

Keep plastic bags, tags etc. out of reach of children and pets as they can be a source of danger.

## CAFFITALY SYSTEM CARE CONTACT

For more information on the machine operation, available capsules and other useful hints and tips go to the Caffitaly website: **[www.caffitalysystem.com.au](http://www.caffitalysystem.com.au)**

Phone: **AU 02 9846 0307 | NZ 0800 450 894**

E-Mail: [caffitalysystem@rfg.com.au](mailto:caffitalysystem@rfg.com.au)



# WARRANTY DETAILS

Dear Customer,

Thank you for buying this product. This Machine has been designed and produced using the best technologies available.

## 1. Warranty Details:

- (a) If your Caffitaly System Machine develops a fault or defect during the warranty period, and subject to the terms below, we will repair it or replace it.
- (b) We offer this warranty on top of any guarantees imposed by the Australian Competition and Consumer Act 2010 and any other applicable State or Territory legislation (if your product was purchased in Australia) and the New Zealand Consumers Guarantees Act (if your product was purchased in New Zealand).
- (c) The warranty applies for 12 months from the date of purchase.
- (d) The warranty covers fault or defects in the product's materials or manufacturing.
- (e) The warranty does not cover:
- (f) Misuse, or use other than in accordance with the product's instructions;
- (g) Negligence on your part;
- (h) Normal wear and tear; or
- (i) Faults or defects caused by third parties, including work done by unauthorised service or repair agents.

## 2. Making a Warranty Claim

- (a) To make a claim you should first contact the **Caffitaly System Customer Service Line** by telephone on **02 9846 0307** in Australia or **0800 450 894** in New Zealand and we will be able to provide you with the appropriate next steps for service or replacement of your machine.
- (b) Before contacting the Caffitaly System Customer Service Line, please make sure you have carefully read the Instruction Manual supplied with the machine.
- (c) After you have initiated the claim via the telephone, we may ask you to return the product to us, as per the address details in Point 4.
- (d) You will need to provide your receipt as proof of purchase in order to make a claim under the warranty.
- (e) Once you return the product and lodged a claim to us, we will assess the claim and let you know whether it is covered. The decision whether to repair or replace a product

is at our sole discretion unless there is a 'major failure' as defined in the Australian Consumer Law or New Zealand Consumers Guarantees Act.

- f) If it is covered we will deliver the repaired or replaced product back to you. We will bear this cost.
- g) If it is not covered, we will deliver the product back to you and you will bear the transport cost.

## 3. General service and repair enquiries

For general service and repair enquiries, please contact us on the telephone number below.

## 4. Roasting Australia Holdings contact details

Roasting Australia Holdings Pty Limited  
11 Hoyle Avenue, Castle Hill, NSW 2154  
Phone Australia: 02 9846 0307  
Phone New Zealand: 0800 450 894

## 5. Statutory Guarantees

As well as the Roasting Australia Holdings Pty Limited warranty, our goods come with guarantees that cannot be excluded under the Australian Consumer Law and New Zealand Consumers Guarantees Act. You are entitled to a replacement or refund for a major failure and for compensation for any other reasonably foreseeable loss or damage. You are also entitled to have the goods repaired or replaced if the goods fail to be of acceptable quality and the failure does not amount to a major failure.

## 6. Claim Details

If you are making a claim under the warranty or the statutory guarantees, we will require the following information from you:

- a) Name;
- b) Address;
- c) Product purchased;
- d) Date of purchase;
- e) Machine Serial Number;
- f) Shop of purchase;
- g) Description of the problem.



NOTES:

# THE UNIQUE CAFFITALY SYSTEM CAPSULE

WHAT SETS US APART FROM THE REST?  
OUR UNIQUE FILTERED CAPSULE DESIGN



EXTRACTION PERFECTED. Inside every Caffitaly System capsule there are two innovative filters: Thanks to the upper one, we can obtain a uniform distribution of water over the entire surface of the coffee. Then the bottom filter ensures the best consistency of brewing producing the perfect cup every time. This unique design is why other capsules on the market do not work with the Caffitaly System Machine. **Only use capsules displaying the Caffitaly System logo with this machine.**



For more information on the machine operation,  
available capsules and other useful hints and tips  
go to the Caffitaly website:

[www.caffitalysystem.com.au](http://www.caffitalysystem.com.au)